



ORDER BOOK
FALL / WINTER 2020



WHAT'S INSIDE?

WOMEN //

WOMEN TEE4
ANDALUCIA PANTS6
PARTY DRESS LS7
RANI8
HEMP LEGGING10
V-TEE (SOFT)12
AURORA DRESS14
KORA SKIRT16
POMME SWEATER18
ELISA TOP20
BELLE TOP22
ALPUJARA SKIRT23
CARLA SWEATER24
ZAZ TEE26
PANTSY ORIGINAL ...28
DAILY SKIRT30
LEXA PANTS32

MEN //

MEN'S TEE PRINT ...34
MEN'S TEE BLANK....39
PETER PAN(TS)40
LONG FLOW PANTS ...42
GOMME PULL43
RENEE44
LUCAS HOODIE46
COLLY SWEATER48
BOXER50

COLOR CHART52



WOMEN'S COLLECTION



WOMEN TEE BLANK/PRINT

45% ORG. COTTON 55% HEMP

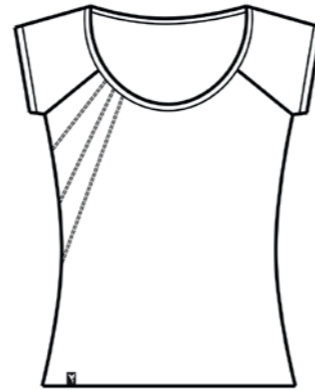
220 G/M

SIZES // XS - S - M - L - XL

COLORS //

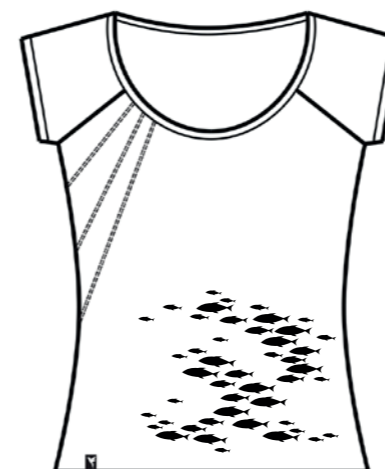
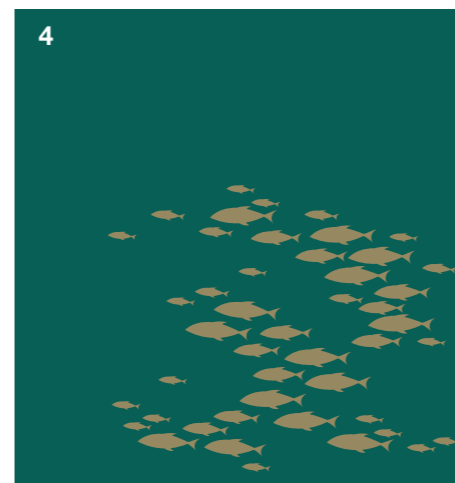
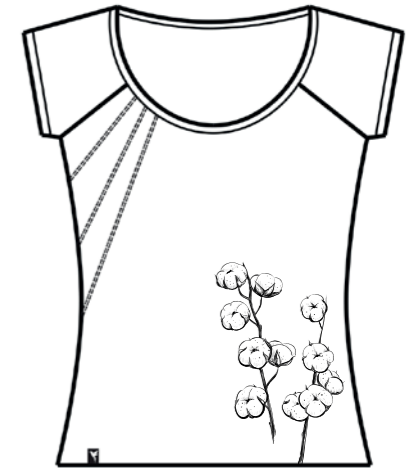
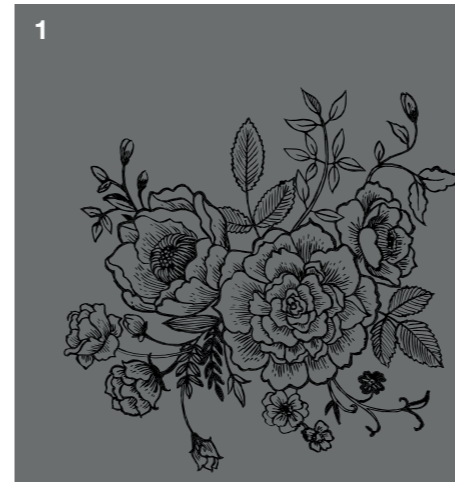


LIGHT GREY - BLACK - DARK BLUE - TEAL - OCHRE - LEAF GREEN



HEMP TEE WITH
PRINT ON FRONT //

1. ROSE BOUQUET
2. BORN FREE - GOLD
3. COTTON FLOWERS
4. FISH - GOLD
5. DIENTE DE LEON - SILVER
6. TREE



ANDALUCIA PANTS

53% HEMP 5% SPANDEX 42% ORG. COTTON

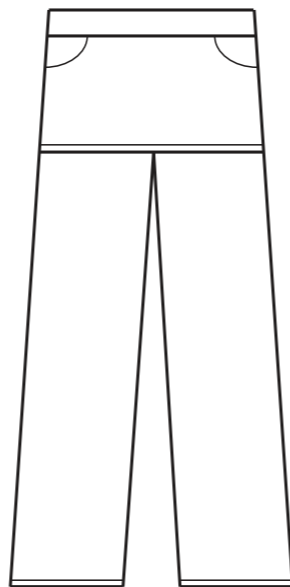
300 G/M

SIZES // XS - S - M - L - XL

COLORS //

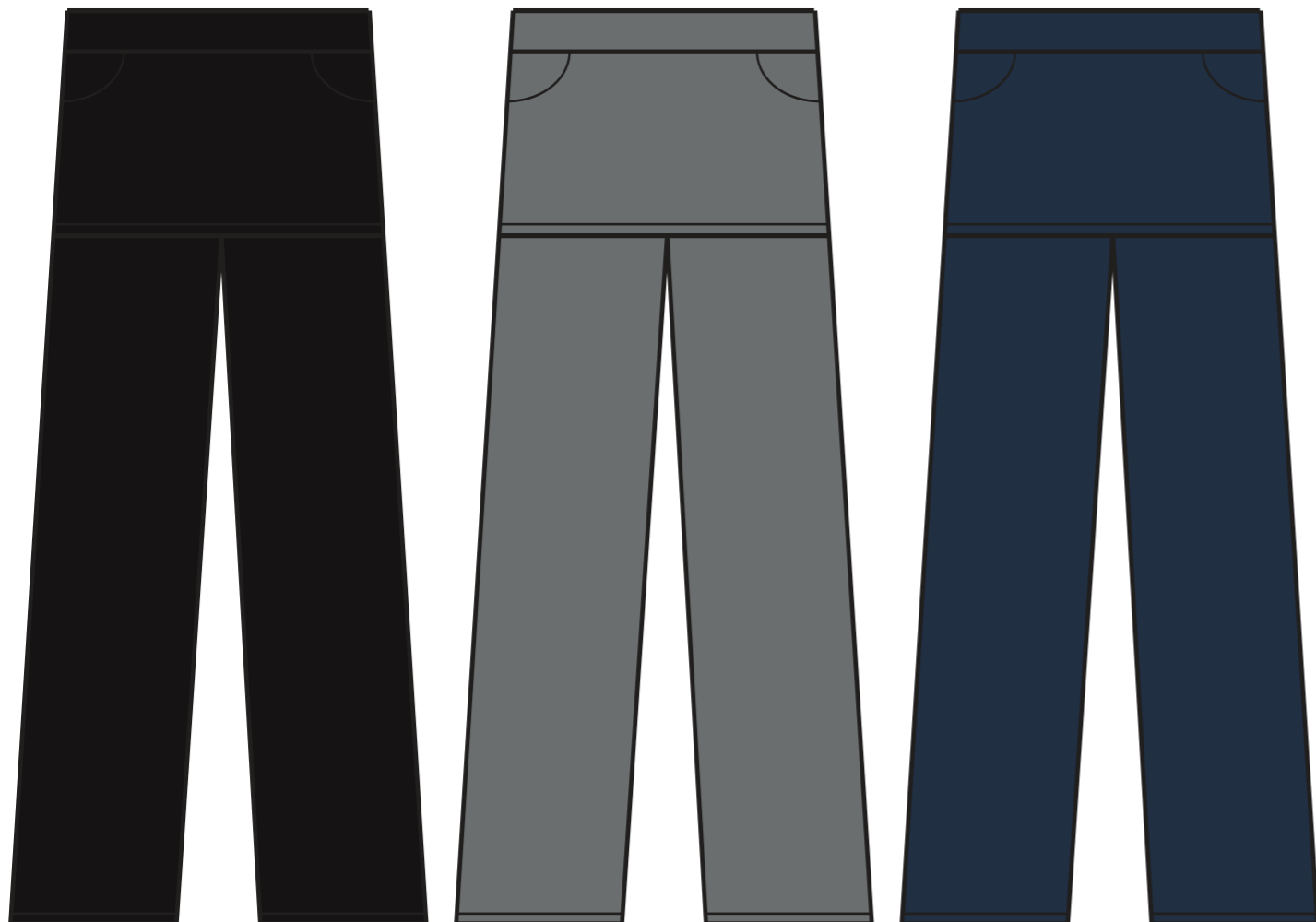


BLACK - LIGHT GREY - DARK BLUE



NICE LOOKING PANTS WITH ATTACHED MINI SKIRT !

2 POCKETS AND WARM, STRECHY FABRIC.



PARTY DRESS LONG SLEEVE

68% ORG. COTTON 5% SPANDEX 27% HEMP

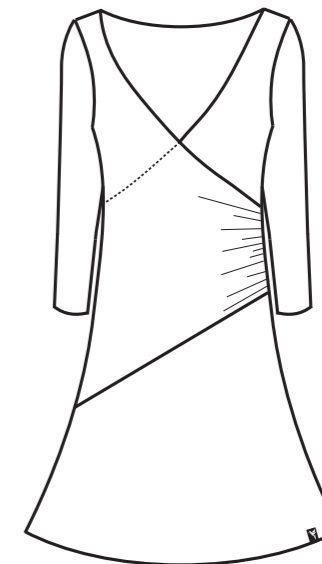
185 G/M

SIZES // XS - S - M - L - XL

COLORS //



DEEP OCEAN - BLACK - MERLOT



THE ORIGINAL 'PARTY DRESS' WITH LONG SLEEVES

FOR COSY FALL/WINTER DAYS...

3 BASIC COLORS SO YOU CAN COMBINE EASILY.

//SOFT COMFY FABRIC



RANI

68% ORG. COTTON
5% SPANDEX
27% HEMP

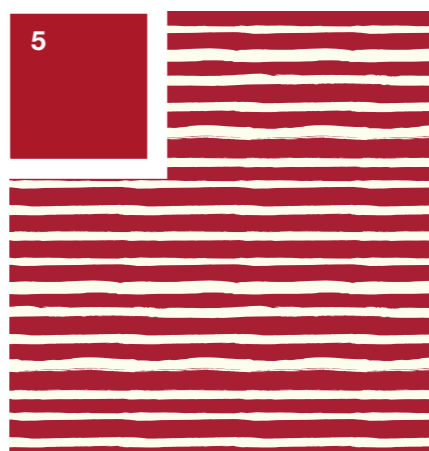
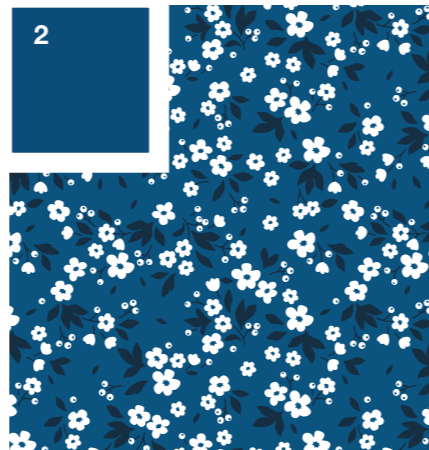
185 G/M

SIZES // XS - S - M - L - XL

COLORS //



BLACK - BLUE MOON - BLOODY RED - LEAF GREEN - CHILLI RED



RANI PLAIN //

1. BLACK - PLAIN

RANI WITH
ALL OVER PRINT //

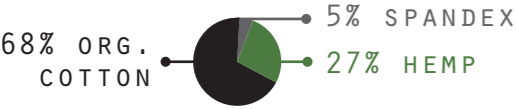
2. BLUE MOON +
LITTE FLOWERS

3. BLOODY RED +
LA VIE EN ROSE

4. LEAF GREEN +
FLORES DE HADAS

5. CHILLI RED + STRIPES

HEMP LEGGING



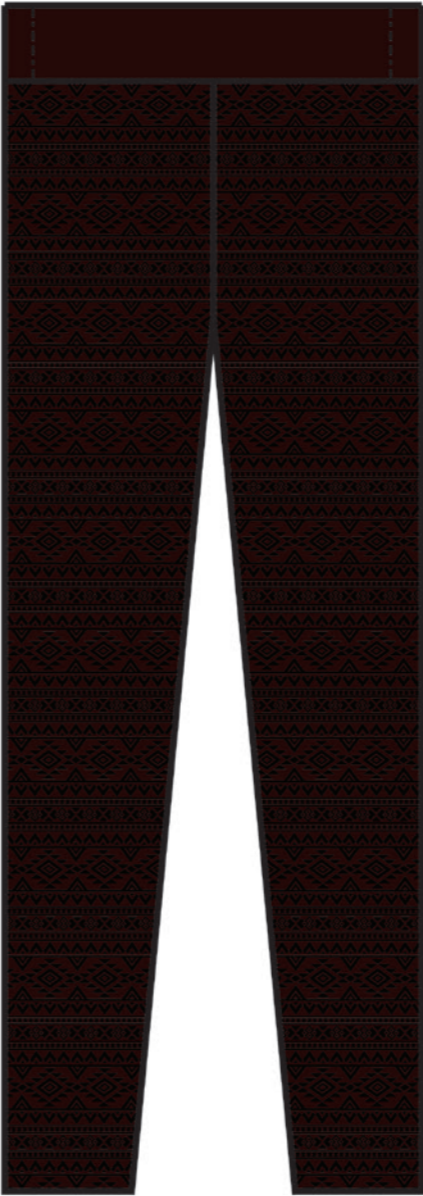
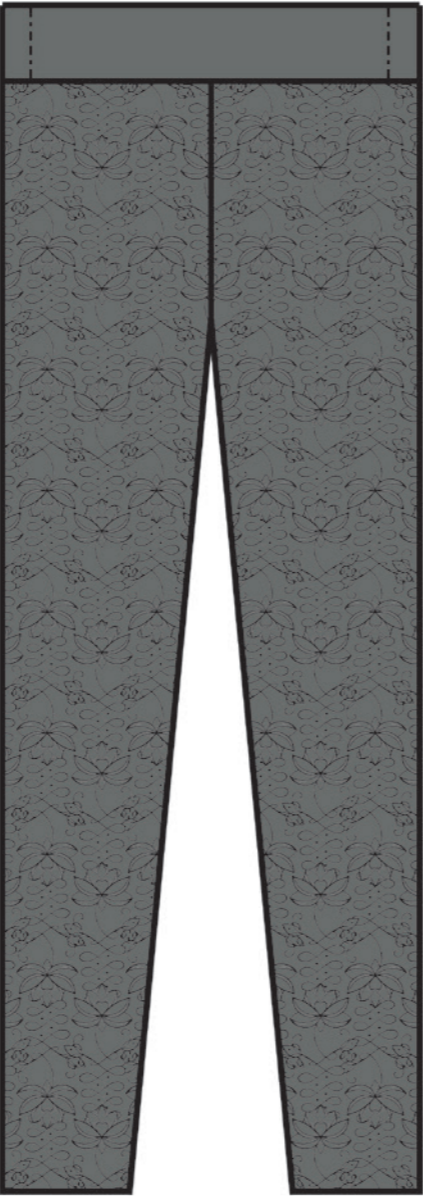
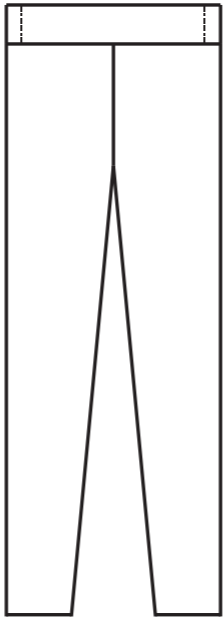
185 g/m

SIZES // XS - S - M - L - XL

COLORS //



BLACK - LIGHT GREY - COFFEE BEAN



BASIC FIT LEGGING.

3 NEUTRAL COLORS WITH SUBTLE PRINT.

PERFECT COMBINATION WITH ANY TOP,
DRESS OR SKIRT !

ALL OVER PRINT
VERSIONS //

- 1.BLACK + YOGA FLOWERS
- 2.LIGHT GREY + LOTUS
- 3.COFFEE BEAN + MAYA



V - TEE (SOFT) BLANK/PRINT

68% ORG. COTTON 5% SPANDEX 27% HEMP

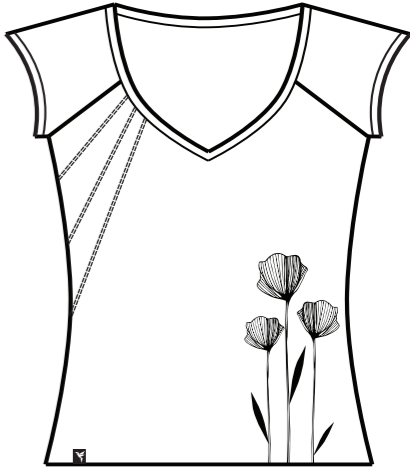
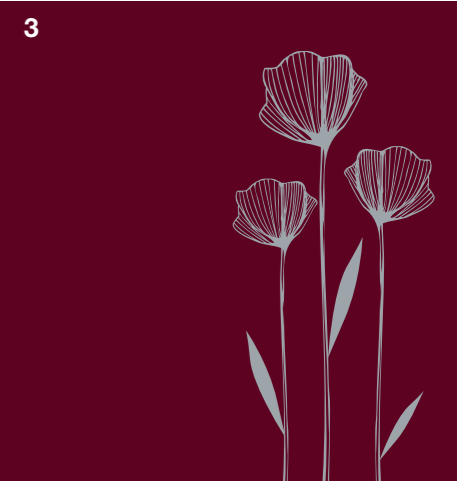
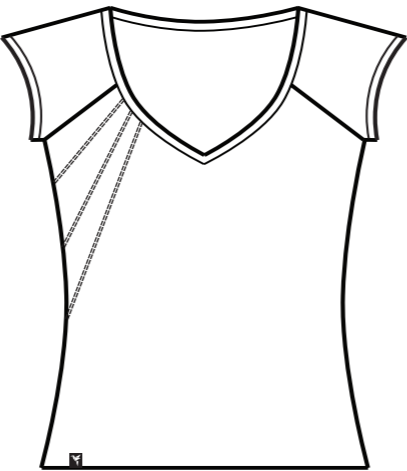
185 G/M

SIZES // XS - S - M - L - XL

COLORS //



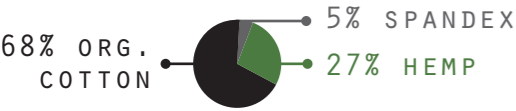
BLACK - DEEP OCEAN - MERLOT



V-TEE WITH PRINT //

- 1.MAGIC BIRD - GOLD
- 2.LA ROSA
- 3.COQUELICOT

AURORA DRESS



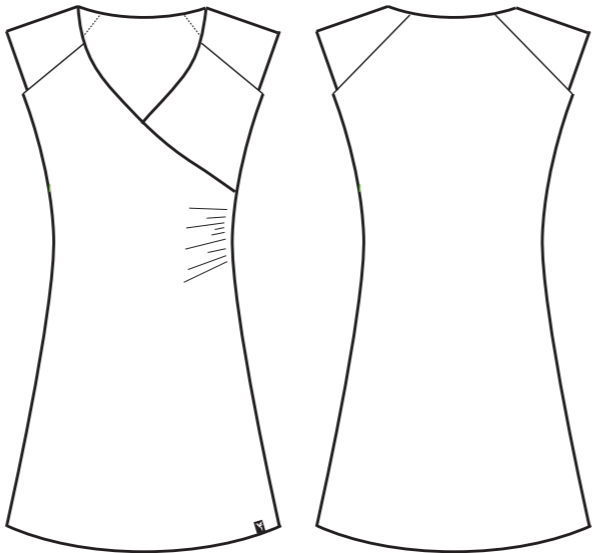
185 g/m

SIZES // XS - S - M - L - XL

COLORS //



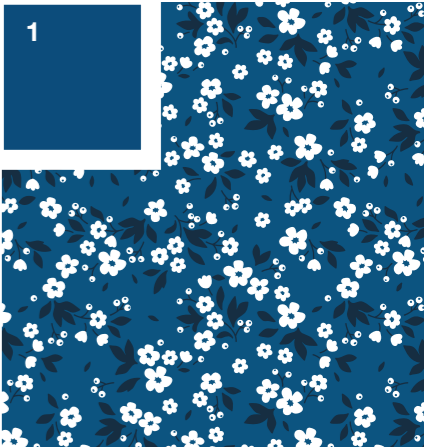
BLUE MOON - LEAF GREEN - BLOODY RED



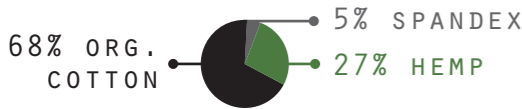
OUR AURORA DRESS IS AS COMFY AS THE
PARTY DRESS. SAME FABRIC,
BUT DIFFERENT SHAPE OF ARMS,
A LITTLE BIT LESS WIDE
AND A LITTLE BIT LONGER.
WE BELIEVE IT'S A MUST HAVE FOR THE
UPCOMING SUMMER VIBES...

VERSIONS //

1. BLUE MOON +
LITTE FLOWERS
2. LEAF GREEN +
FLORES DE HADAS
3. BLOODY RED +
LA VIE EN ROSE



KORA SKIRT



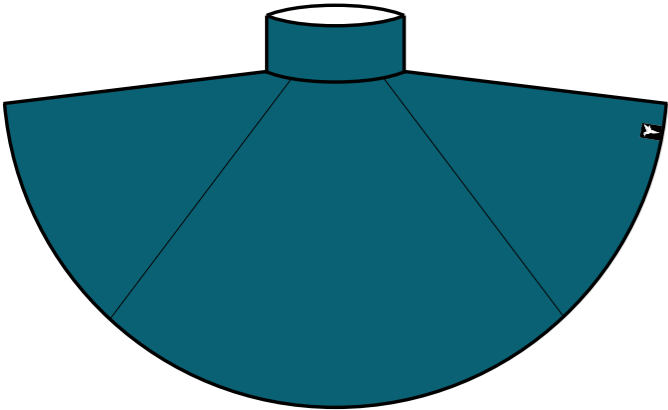
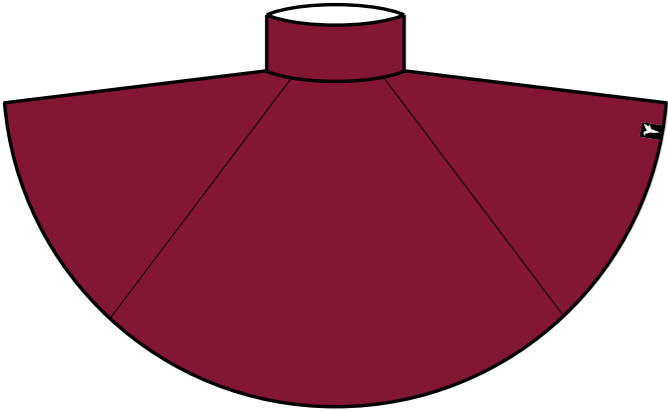
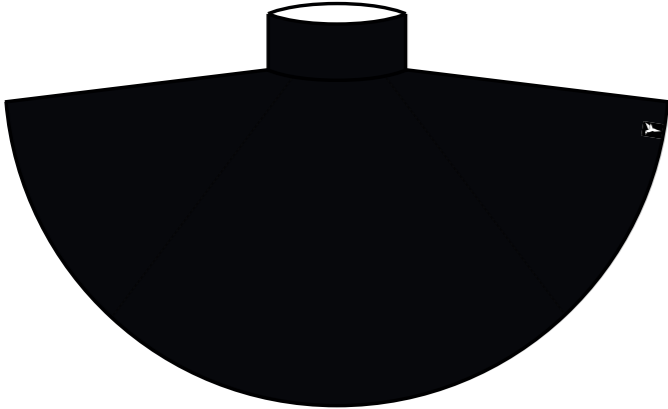
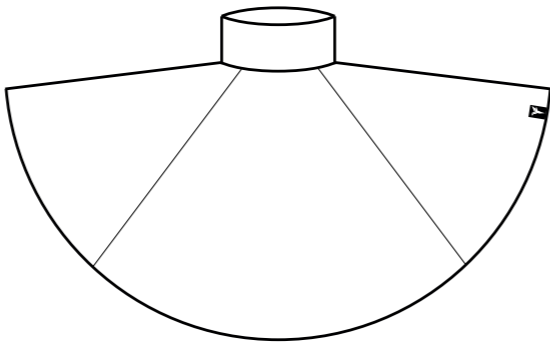
185 G/M

SIZES // XS - S - M - L - XL

COLORS //



BLACK - BLOODY RED - DEEP OCEAN



IN FOR A SWING?
THEN THE KORA SKIRT
MUST BE YOUR THING :-)

// SOFT, STRETCHY FABRIC



POMME SWEATER

55% HEMP 45% ORG. COTTON

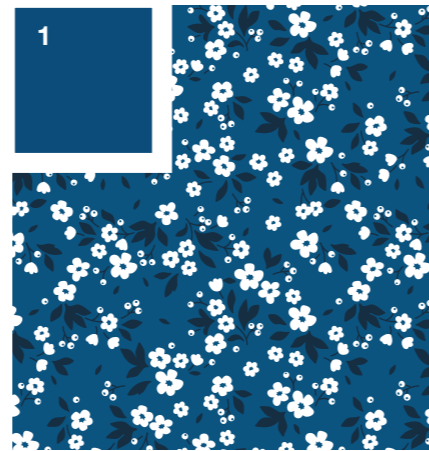
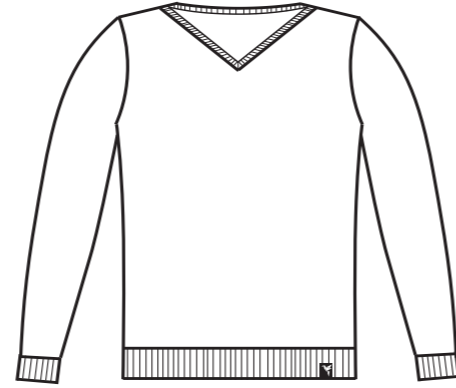
400 G/M

SIZES // XS - S - M - L - XL

COLORS //



BLUE MOON - LIGHT GREY - LEAF GREEN



NEW WOMEN SWEATER !

SAME COMFORT AS THE 'SWEETER' FROM

PREVIOUS COLLECTIONS,

BUT NOW WITH V-SHAPED NECK.

// AVAILABLE IN 3 DIFFERENT

ALL OVER PRINT VERSIONS.

ALL OVER PRINT VERSIONS //

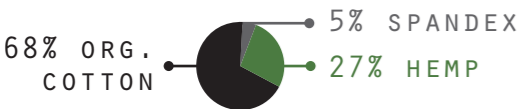
1. BLUE MOON + COQUILLES

2. SPRING GREEN +
TROPICAL GARDEN

3. RETRO BLUE + GRANNY



ELISA TOP



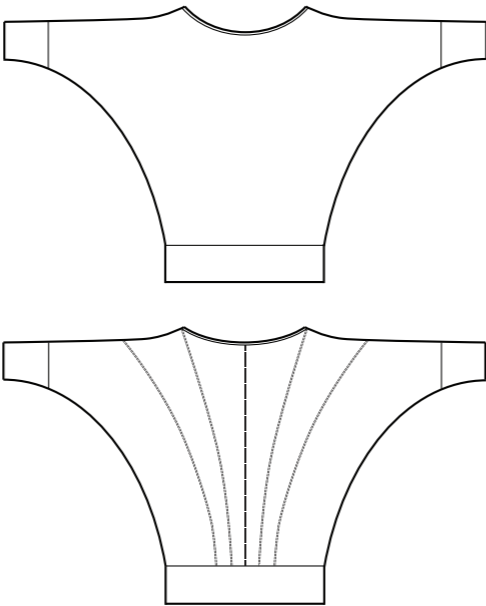
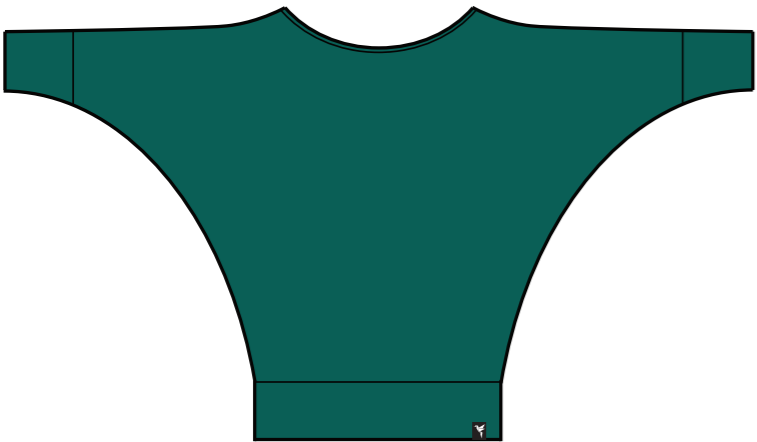
185 g/m

SIZES // XS - S - M - L - XL

COLORS //



BLACK - TEAL - DARK BLUE



BELLE TOP

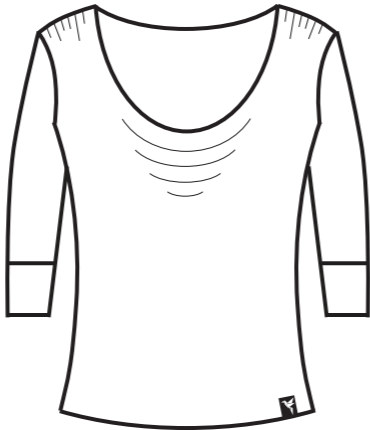
68% ORG. COTTON
5% SPANDEX
27% HEMP
185 G/M

SIZES // XS - S - M - L - XL

COLORS //



BLOODY RED - BLACK - TEAL



STYLY TOP WITH 3/4 SLEEVES

AND DRAPING COLLAR.

GOOD LOOKING AND COMFORTABLE !



ALPUJARRA SKIRT

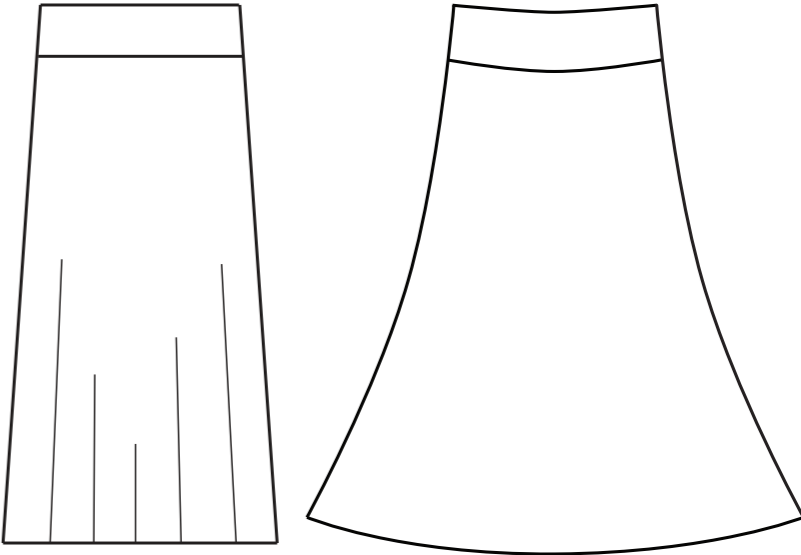
68% ORG. COTTON
5% SPANDEX
27% HEMP
185 G/M

SIZES // XS - S - M - L - XL

COLORS //

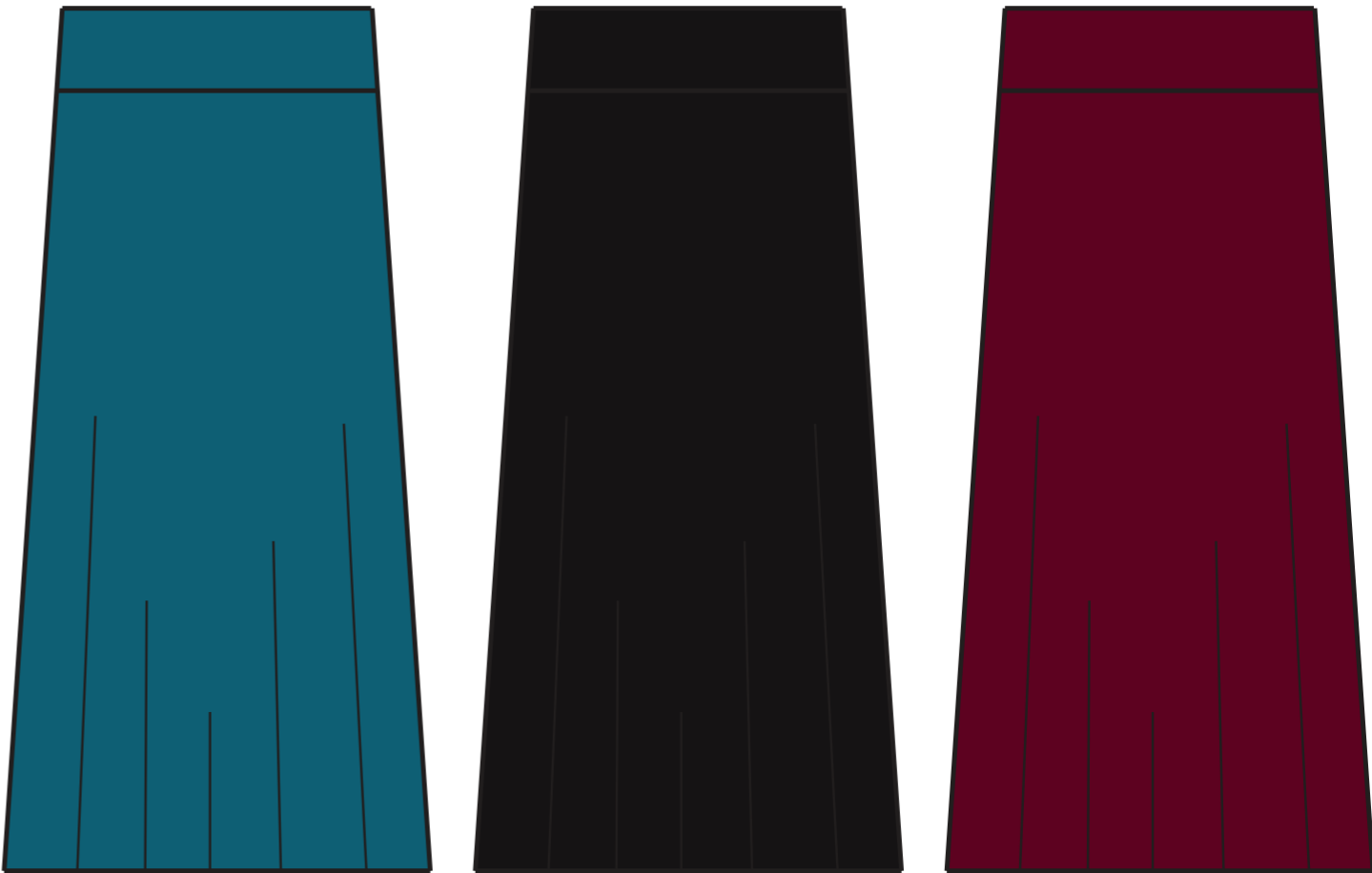


DEEP OCEAN - BLACK - MERLOT



THIS IS A LONG WINTER SKIRT,
ALL THE WAY DOWN TO YOUR FEET :-)

//SOFT COMFY FABRIC



CARLA SWEATER

53% HEMP 5% SPANDEX 42% ORG. COTTON

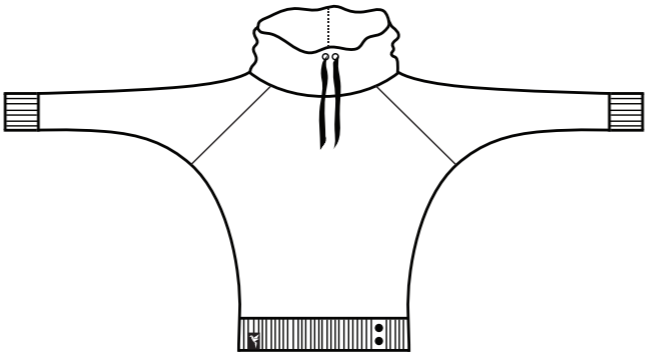
300 G/M

SIZES // XS - S - M - L - XL

COLORS //



BLACK - LIGHT GREY - MERLOT



A 2ND EDITION OF OUR LAST
WINTER 'CARLA SWEATER'.
IMPROVED FIT WITH
DIFFERENT SHOULDERS.

// WARM & COMFY



ZAZ TEE BLANK/PRINT

45% ORG. COTTON — 55% HEMP

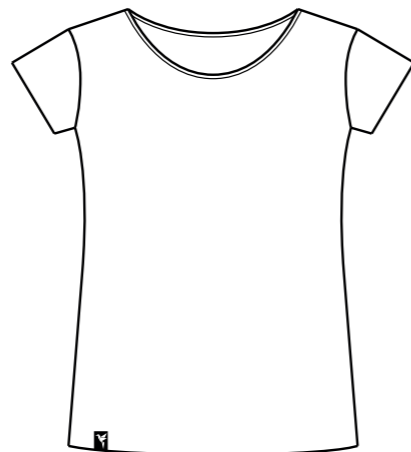
220 G/M

SIZES // XS - S - M - L - XL

COLORS //



LIGHT GREY - OCHRE - DARK BLUE



ZAZ TEE WITH PRINT //

- 1. MISTY FLOWERS
- 2. DIA DE LOS MUERTOS
- 3. MAGNOLIA - SILVER

NEW BASIC, MORE LOOSE FIT WOMEN TEE !

AVAILABLE IN 3 BLANK COLORS

AND 3 PRINT VERSIONS.

// SAME FABRIC AS OUR WELL KNOWN 'WOMEN TEE'

PANTSY ORIGINAL

44% ORG. COTTON
3% SPANDEX
53% HEMP

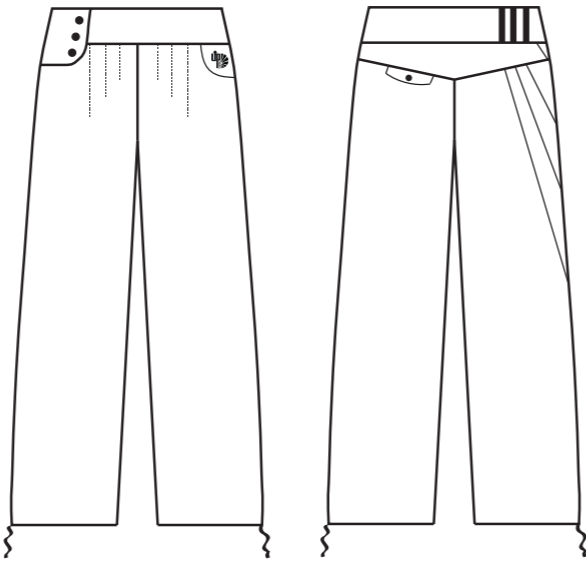
241 G/M

SIZES // 34 - 36 - 38 - 40 - 42 - 44

COLORS //



BLACK - DEEP OCEAN - COFFEE BEAN



ALREADY SINCE THE BEGINNING A WINNER:

OUR PANTSY ORIGNIAL !

AVAILABLE IN 3 NICE, SUBTLE COLORS,
EASY TO COMBINE WITH ANY TOP OR SWEATER.

// TOO LONG? JUST BIND THE CHORDS ON THE BOTTOM OF THE PANTSY *

* SEE PICTURE BELOW



DAILY SKIRT

53% HEMP 5% SPANDEX 42% ORG. COTTON

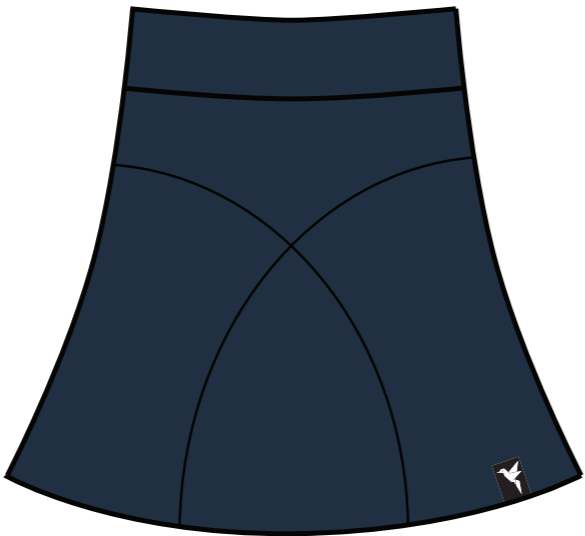
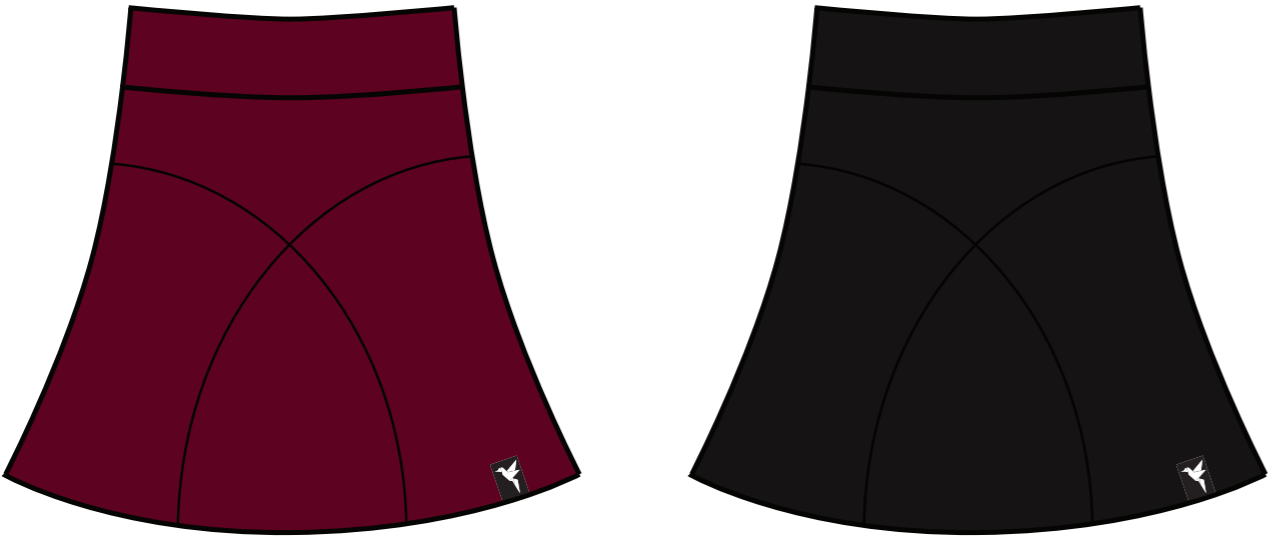
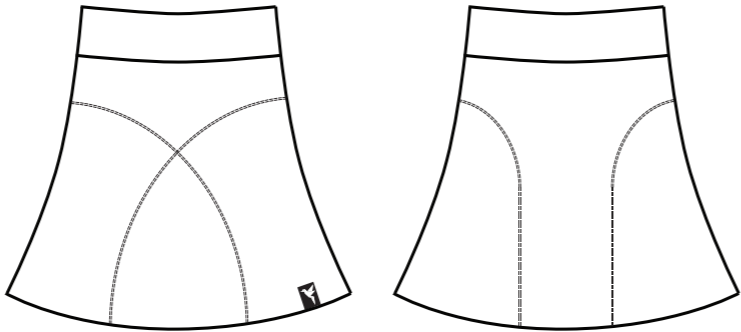
300 G/M

SIZES // XS - S - M - L - XL

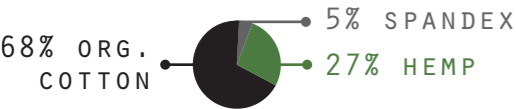
COLORS //



MERLOT - BLACK - DARK BLUE



LEXA PANTS



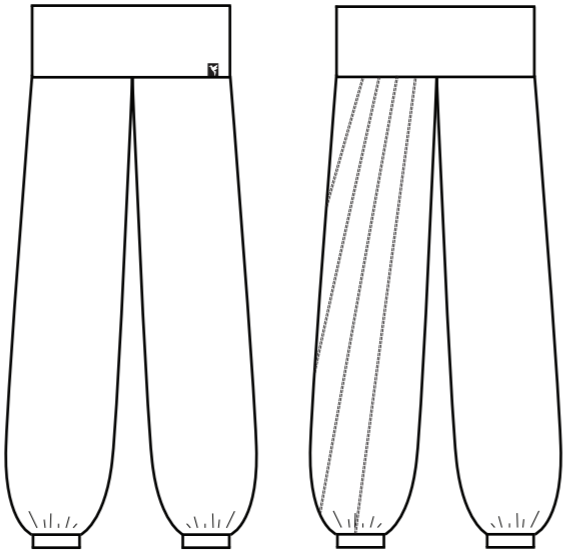
185 g/M

SIZES // XS - S - M - L - XL

COLORS //



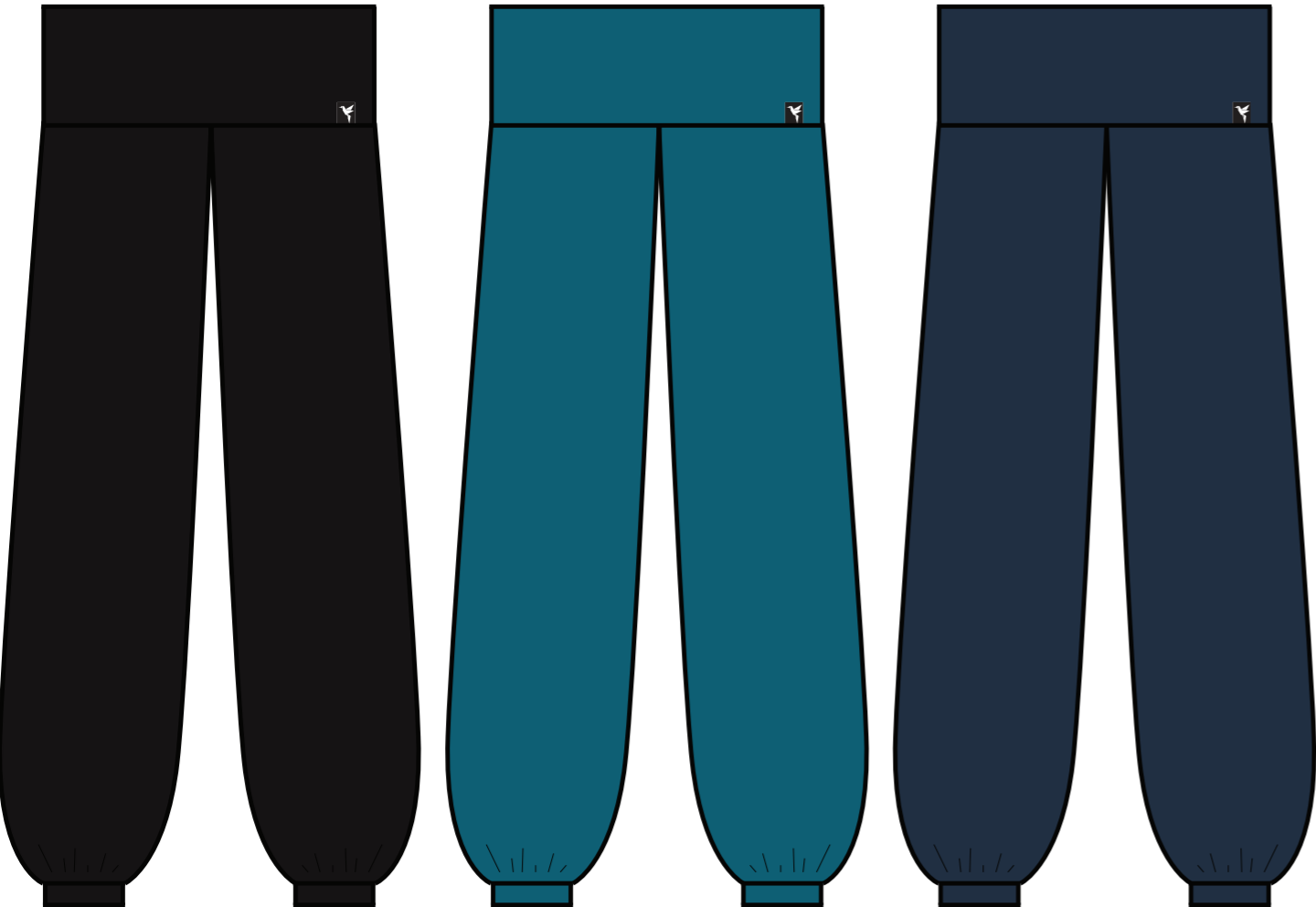
BLACK - DEEP OCEAN - DARK BLUE



LONG VERSION OF THE 'RELAXY PANTS'.

A PLEASURE TO WEAR AND VERY COMFY PANTS,

ALSO GOOD FOR YOGA !



MEN'S COLLECTION



MEN'S TEE PRINT

45% ORG. COTTON ● 55% HEMP

220 G/M

SIZES // XS - S - M - L - XL

COLORS //

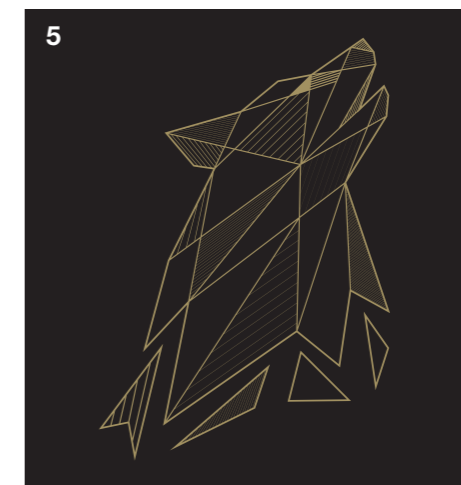
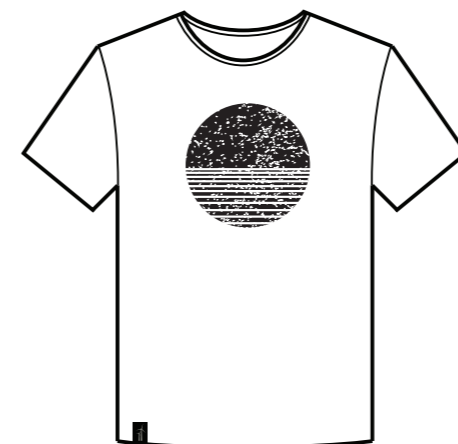
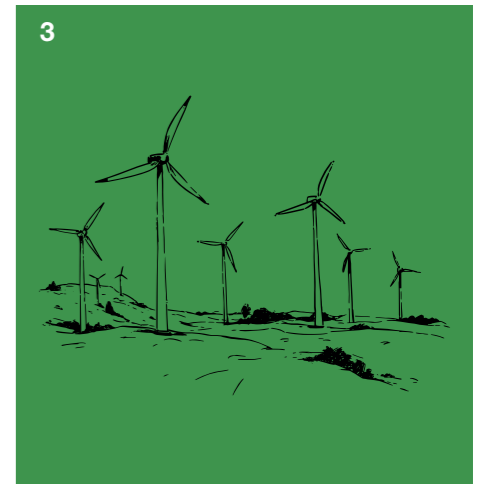


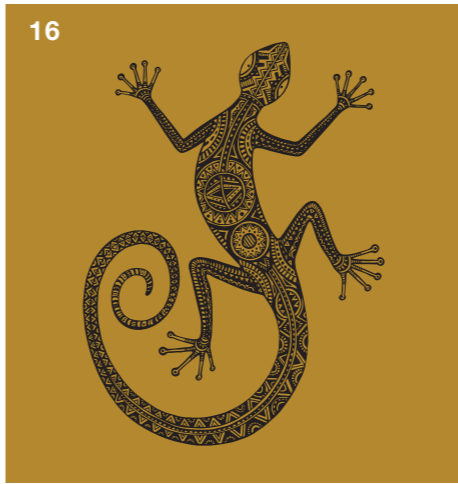
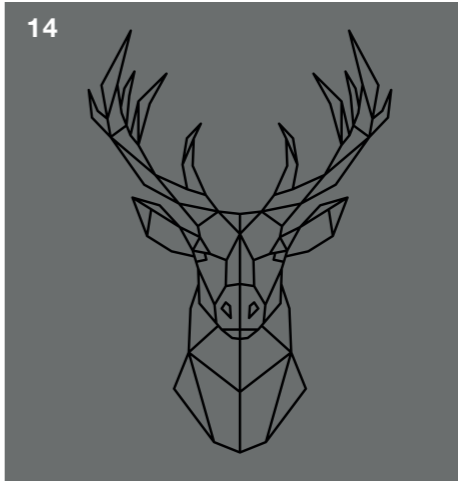
BLACK - LIGHT GREY - NATURAL - LEAF GREEN - DARK BLUE - OCHRE

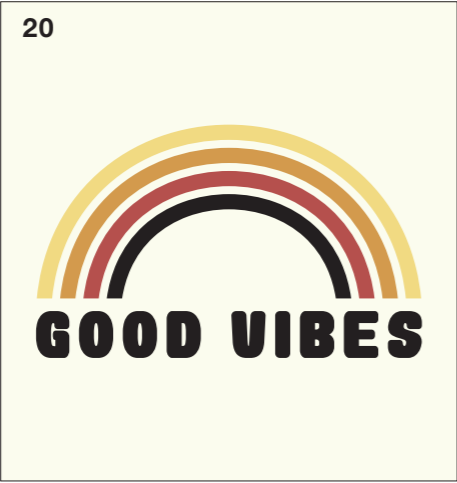


MEN'S TEE WITH PRINT //

1. SUPPORT FARMER
2. MAY THE FOREST BE WITH YOU
3. WINDMILLS
4. MINIMALISM
5. WOLF - GOLD
6. BIKE
7. ROOTS
8. GOOD VIBES ONLY
9. LET IT BEE
10. MEXICAN
11. JUNGLE CAMELEON
12. MUSIC
13. RISE HIGER
14. DEER 2020
15. WILDLIFE
16. GECKO
17. MONKEY MUSIC
18. PROTECT YOUR ENVIRONMENT
19. FREEDOM LIFE
20. GOOD VIBES
21. RESPECT YOURSELF
22. SAVE THE BEES
23. BACK TO THE WOODS
24. ALOE







MEN'S TEE BLANK

45% ORG. COTTON 55% HEMP

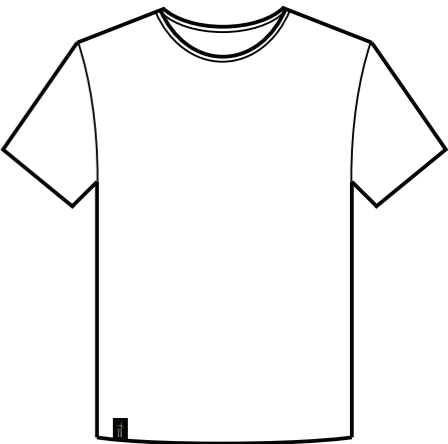
220 G/M

SIZES // XS - S - M - L - XL

COLORS //



BLACK - LIGHT GREY - NATURAL - LEAF GREEN - DARK BLUE - OCHRE



PETER PAN(TS)

78% ORG. COTTON



22% HEMP

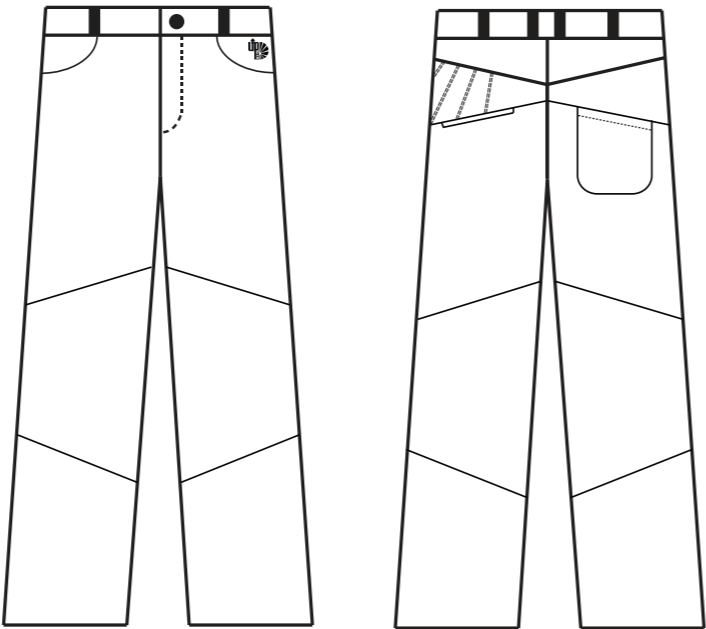
251 g/m

SIZES // XS - S - M - L - XL - XXL

COLORS //



BLACK - LIGHT GREY - DARK BLUE



LOOSE FIT, GREAT SNIT !
PERFECT MAN PANTS
FOR ANY OCCASION :-)



LONG FLOW PANTS

55% HEMP 45% ORG. COTTON

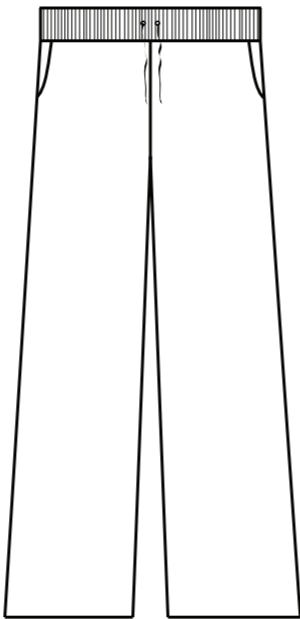
400 g/m

SIZES // XS - S - M - L - XL - XXL

COLORS //

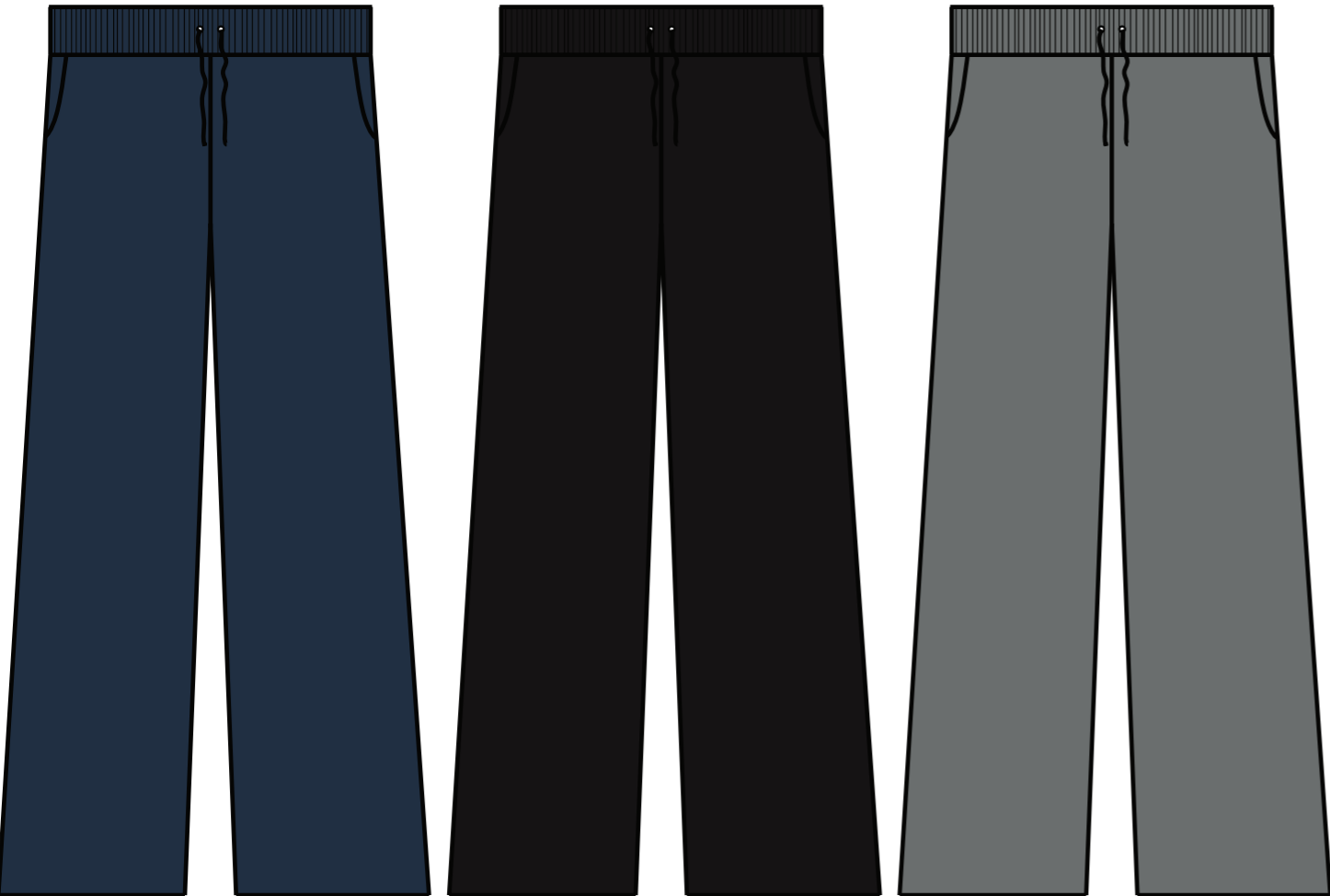


DARK BLUE - BLACK - LIGHT GREY



LOOSE FIT, TRAINING PANTS.

// SWEATER FABRIC



GOMME PULL

53% HEMP 5% SPANDEX 42% ORG. COTTON

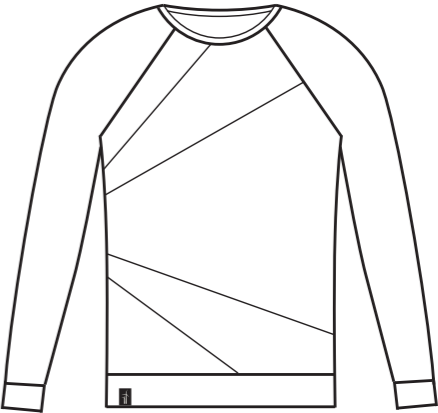
300 g/m

SIZES // XS - S - M - L - XL

COLORS //



MERLOT - BLACK - DARK BLUE



SOFT, SLIGHTLY STRECHED FABRIC.

HIGLY COMFORTABLE !



RENEE

55%
HEMP



45% ORG. COTTON

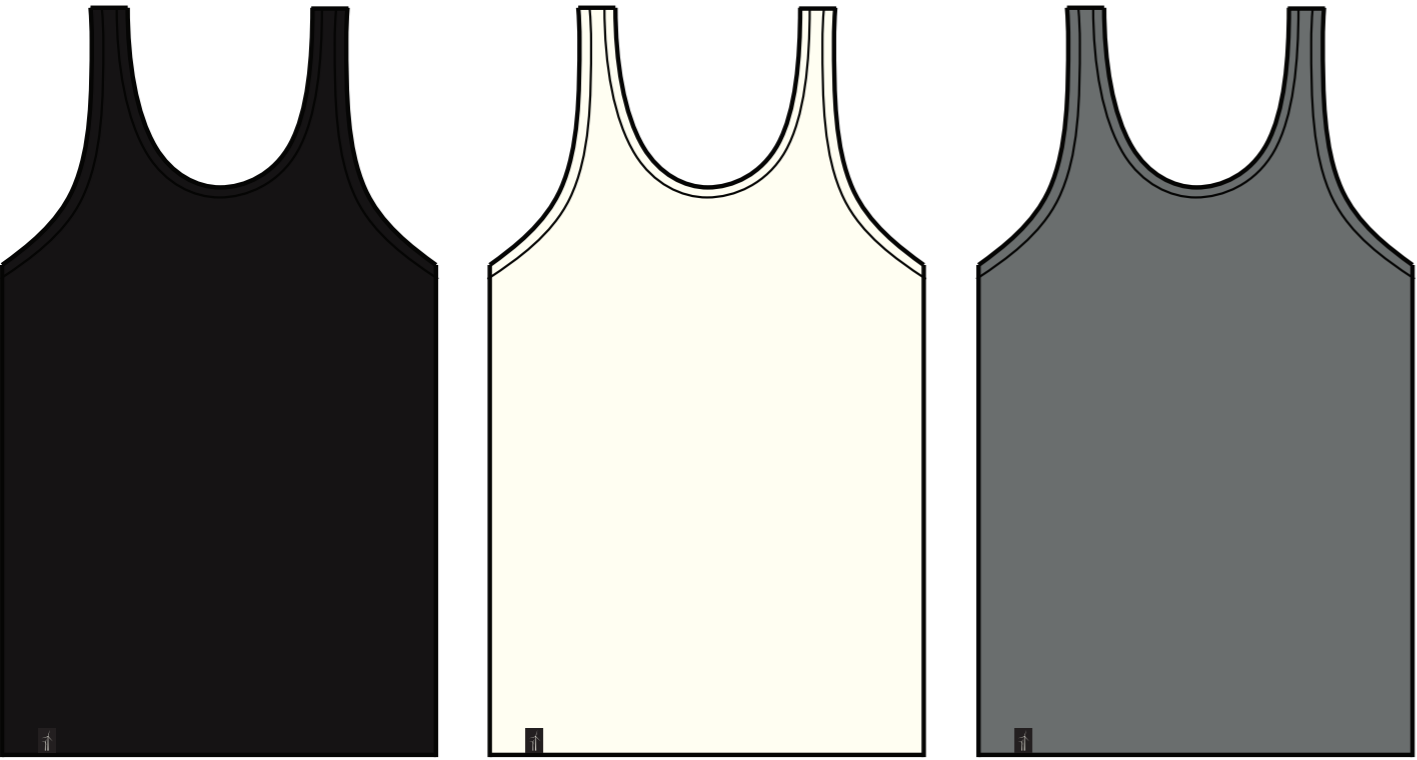
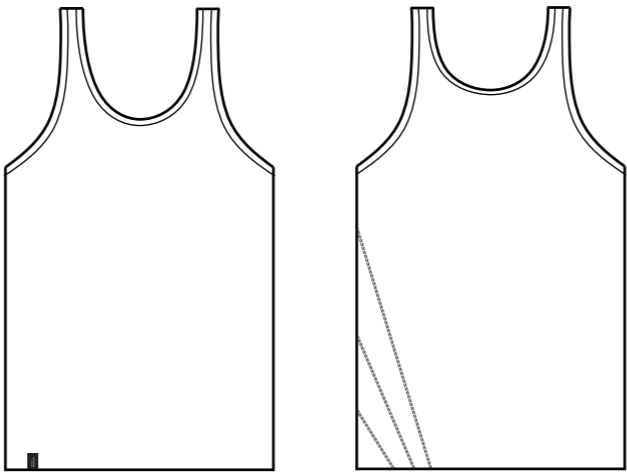
220 G/M

SIZES // XS - S - M - L - XL

COLORS //



BLACK - NATURAL - LIGHT GREY



LUCAS HOODIE BLANK/PRINT

55%
HEMP



45% ORG. COTTON

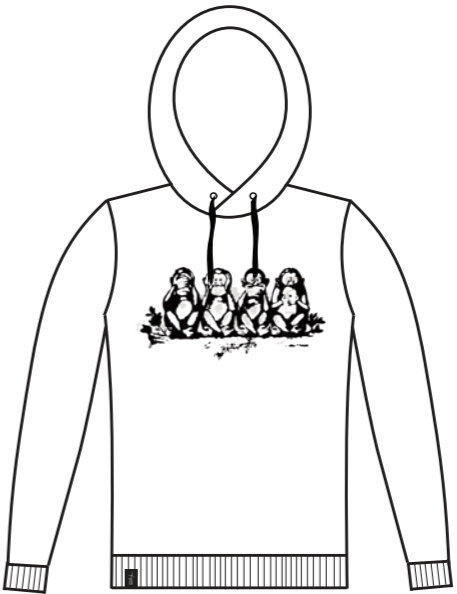
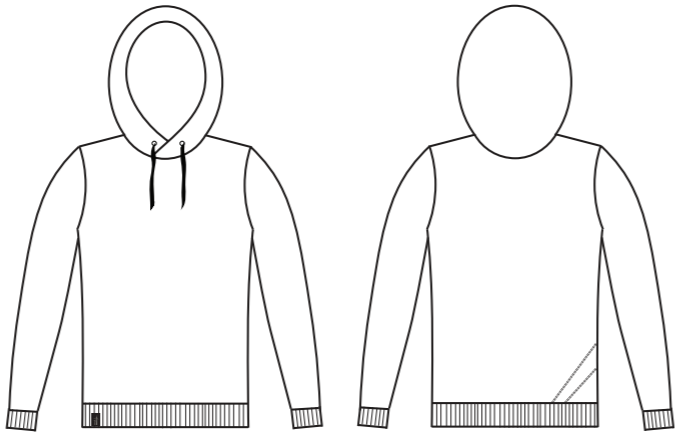
400 G/M

SIZES // XS - S - M - L - XL

COLORS //



BLACK - DARK BLUE - LIGHT GREY



LUCAS HOODIE WITH PRINT //

- 1.PROTECT YOUR ENVIRONMENT
- 2.WHATSAAP
- 3.ALOE

COLLY SWEATER

55%
HEMP 45% ORG. COTTON

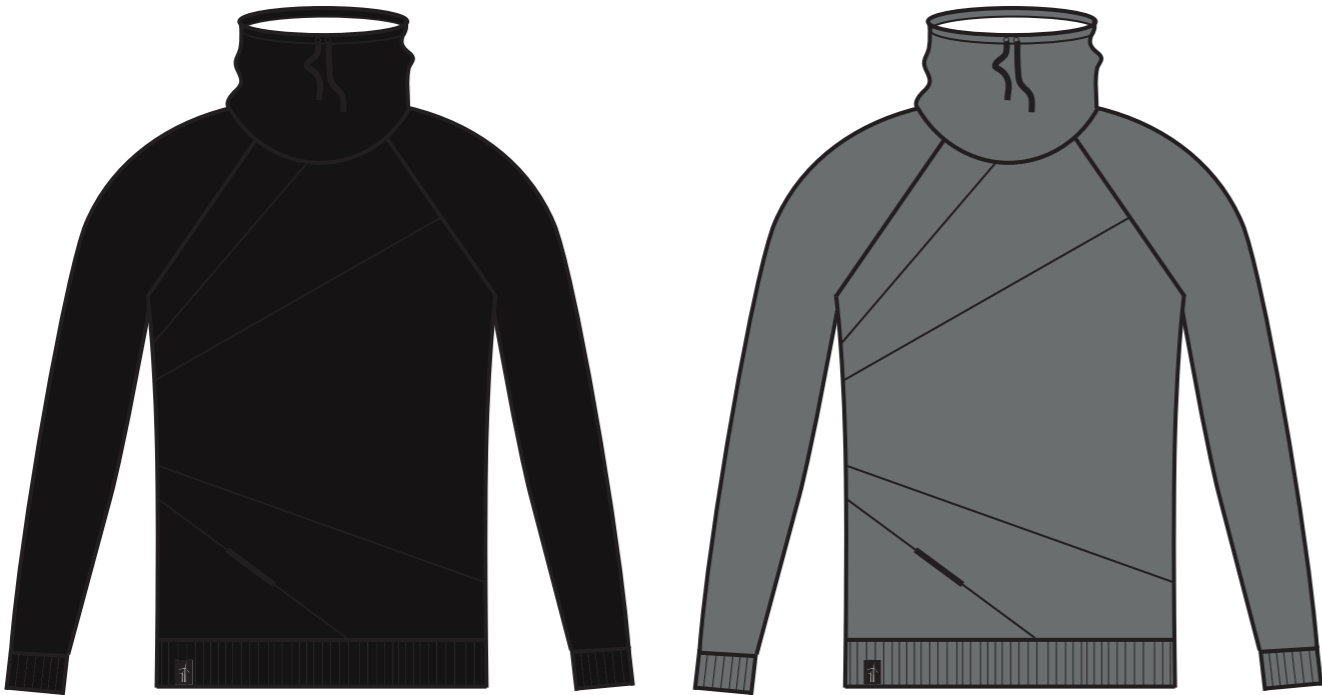
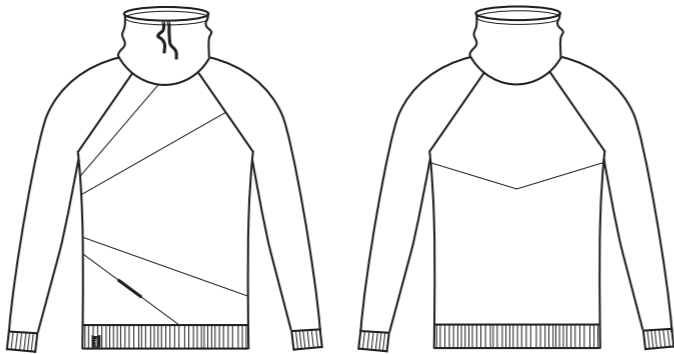
400 G/M

SIZES // XS - S - M - L - XL

COLORS //



BLACK - LIGHT GREY - DARK BLUE



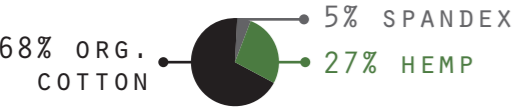
WARM AND COSY WINTER SWEATER

WITH COMFY COLLAR AND

SECRET HIDDEN POCKET ;-)



BOXER



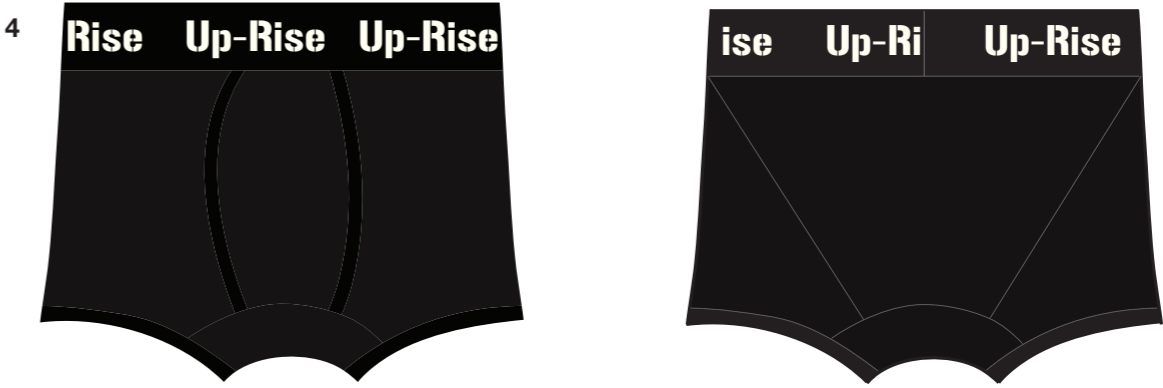
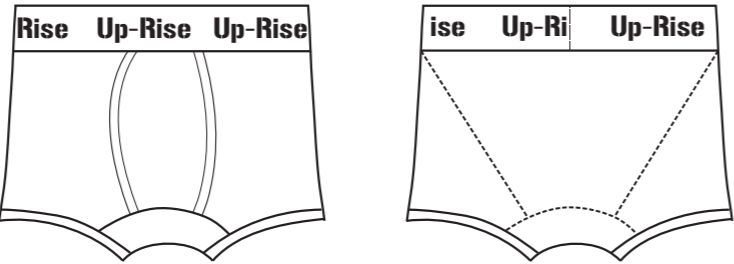
185 G/M

SIZES // XS - S - M - L - XL

COLORS //



BLUE MOON - LIGHT GREY- LEAF GREEN - BLACK - CHILLI RED



ALL OVER PRINT VERSIONS //

- 1.BLUE MOON + LITTLE FLOWERS
- 2.BLIGHT GREY + LOTUS
- 3.LEAF GREEN + FLORES DE HADAS

PLAIN VERSIONS //

- 4.BLACK
- 5.CHILLI RED

WOMEN & MEN COLORS //



COLORS //

- 1. DEEP OCEAN
- 2. BLUE MOON
- 3. DARK BLUE
- 4. BLACK
- 5. LIGHT GREY
- 6. TEAL
- 7. LEAF GREEN
- 8. NATURAL
- 9. OCHRE
- 10. CHILLI RED
- 11. BLOODY RED
- 12. MERLOT
- 13. COFFEE BEAN

UP-RISE CLOTHING IS MAINLY MADE OUT OF HEMP AND ORGANIC COTTON.
 WE CHOOSE TO WORK WITH HEMP BECAUSE OF THE MANY **ADVANTAGES** AND ECO-FRIENDLY PROPERTIES...

HERE JUST SOME OF THEM:
 HEMP FIBRE HAS BEEN USED FOR THOUSANDS OF YEARS TO PRODUCE TEXTILES!
 THIS PLANT HAS THE STRONGEST NATURAL FIBRE AND IS VERY ENVIRONMENTAL FRIENDLY!
 HEMP CLOTHING IS VERY DURABLE IN EVERY WAY!
 UP-RISE/HEMP CLOTHING KEEPS YOU COOL IN SUMMER & WARM IN WINTER.

WE WORK WITH PARTNERS WHO TAKE CARE ABOUT HIGH **ETHICAL VALUES** IN HUMAN RIGHTS AND ENVI-
 RONMENTAL ISSUES.

ALL OUR CLOTHES ARE PRODUCED IN A FACTORY THAT IS MEMBER OF THE **FAIR WEAR FOUNDATION**
 & USES ONLY **CERTIFIED ORGANIC COTTON** IN THE DIFFERENT MIXED FABRICS.

THE COMBINATION OF ECO-FRIENDLY FIBERS, HIGH QUALITY, FAIR PRODUCTION AND UP TO DATE UR-
 BAN DESIGNS,
 MAKES ‘UP-RISE’ CLOTHING UNIQUE AND READY TO WEAR FOR PEOPLE WHO CARE...
 LET’S SPREAD THE GOOD VIBES AND ENJOY NATURE!
 THANKS & GREETINGS,

PETER, NYNKE & THE ‘UP-RISE’ TEAM



WWW.UP-RISE.BE
 FACEBOOK // UPRISEHEMPWEAR
 INSTAGRAM // UPRISE.HEMPWEAR





PRE-ORDER
DEADLINE FOR THE
FALL/WINTER
COLLECTION 2020
IS 15TH OF MARCH 2020
DELIVERY WILL BE
AUGUST/SEPTEMBER 2020

FOR ORDERS
PETER@UPRISING.BE

MORE INFO
WWW.UP-RISE.BE
FACEBOOK // [UPRISEHEMPWEAR](#)
INSTAGRAM // [UPRISE.HEMPWEAR](#)

