

*sustainability at*  
thought

---



# VISION & MISSION

---

Creating Thoughtful Clothing alone isn't enough. We value doing the right thing and want to feel good about everything we touch. That means we work responsibly – using sustainable textiles and ethical production practices. From the fabrics we use, to how we design and make and deliver our garments. We think about every impact our business has. And it's with the greater aim of minimising our environmental footprint.





We're also proud supporters of slow fashion, which is why we design clothing intended to last. We craft our contemporary, easy-to-wear pieces to become wardrobe favourites.

*"Wear me, love me,  
mend me, pass me on"*

That's our mantra...a few words to remind us to look after what we own. The clothes we love wearing most will last longer with good care. Fix love-worn pieces and hand them on when ready to reduce ever-growing garment waste.



# OUR CONSIDERED APPROACH

---

What began as a concept for simple natural fibre classics to compliment the sunny climes of Sydney, has evolved into a more considered approach to servicing one of the basic necessities of life while endeavouring to minimise unnecessary waste of our planets precious resource.

At Thought we've grown to take a holistic view of fashion and its lifecycle considering people, planet & prosperity.

We demonstrate a successful sustainable business model with an eye to the future. Our forward thinking design and development team unearth creative solutions utilising sustainable textiles and ethical processes to cultivate timeless collections.





# OUR RESPONSIBLE MISSION

---

At Thought we pride ourselves on the efforts working toward sustainable and ethical standards.  
This document explains the core principles of our approach to our supply chain.

The key areas we focus on at Thought are:



**SUSTAINABLE  
MATERIALS**



**ENVIRONMENTAL  
SUSTAINABILITY**



**SOCIAL  
STANDARDS**

# *sustainable* **MATERIALS**

---

We use sustainable textiles with the aim to:

- Reduce use of water
- Reduce use of pesticides and fertiliser
- Reduce CO2
- Reduce Waste





*key fabrics we use:*

# ORGANIC COTTON

---

## WHAT IS IT?

Organic cotton is the most responsible way to grow this thirsty crop by eliminating the use of pesticides and fertilizers. It is good for the earth, the air, the farmers, the wildlife and us.

Organic cotton farming offers a solution. It is a more balanced way of producing cotton that considers the whole ecosystem.

All our organic cotton is GOTS (Global Organic Textile Standard) certified.



*key fabrics we use:*

# ORGANIC COTTON

---

## WHY WE LOVE IT?

There are many aesthetic reasons to love organic cotton:

- It has long, soft, and strong fibres creating a luxurious durable fabric.
- In general, cotton doesn't crease or pill as much as other fabrics.
- Cotton is extremely versatile, due to its close-knit surface structure it is both soft and cool and depending on how it is woven it creates a very absorbent and breathable fabric as well as being easy to wash and care for.





*key fabrics we use:*

# ORGANIC COTTON

---

## WHY WE USE IT?

Organic cotton cuts out the use of toxic and persistent chemicals, improves soil health and increases water conservation. All of which is better for the environment and for farmers and their communities.

Conventional cotton is generally grown as a mono crop, which can destroy soil quality and create a fragile ecosystem. Organic cotton is grown in crop rotation, where other plants are sown to encourage biodiversity. This protects soil quality, preserves water and minimises CO2. All in all, this means that organic cotton needs about 95% less ground water than conventional cotton.



*key fabrics we use:*

## HEMP

---

### WHAT IS IT?

Hemp, or industrial hemp, is a variety of the cannabis sativa plant species that is grown specifically for the industrial use of its derived products.

Hemp fibres are spun and woven into fabric which is extremely popular for the use of textiles and clothing.

Hemp is a strong, durable and extremely sustainable.





*key fabrics we use:*

## HEMP

---

### WHY WE LOVE IT?

There are many aesthetic reasons why we love organic cotton:

- Hemp is one of the strongest and most durable natural textile fibres.
- It has wonderful drape comparable to linen and softens beautifully with use and yet, remains hard-wearing.
- It can be blended with other natural fibres to create fabrics with the durability of hemp and the softness of cotton or bamboo.
- Hemp fabric is breathable and absorbent and is known to keep you warm in winter and cool in summer.



*key fabrics we use:*

## HEMP

---

### WHY WE USE IT?

It's organically grown, and it is an environmentally responsible alternative to non-organic cotton. Every part of the plant can be used to produce thousands of different products.

Not only does hemp grow in a variety of climates and soil types. It grows very tightly spaced (decreased land use) and has a fast rate of growth (which leads to high yields).

It is naturally resistant to most pests, removing the need for most pesticides, herbicides and fungicides.

It thrives on less than most crops. Because of its resiliency, it has also been flagged as a natural way to clean up soil pollution. Hemp is gentle on the earth; and requires very little water; this also includes consumption during processing.





*key fabrics we use:*

**TENCEL®**

---

#### WHAT IS IT?

It's a regenerated cellulosic fibre made from the pulp of eucalyptus trees that are grown on sustainably run farms.

Tencel® is the brand name for this finished fabric.



Tencel® falls between natural and synthetic fibre categories; it's a bit of both and which is why it is often called a regenerated fibre.



*key fabrics we use:*

# TENCEL®

---

## WHY WE LOVE IT?

There are many aesthetic reasons why we love Tencel®:

- As Tencel® fibres have a smooth structure, the woven fabric is particularly silky against the skin.
- Its silky nature also means it is less prone to wrinkles, resulting in a soft and luxurious flattering drape.
- Tencel® is a very versatile fabric.





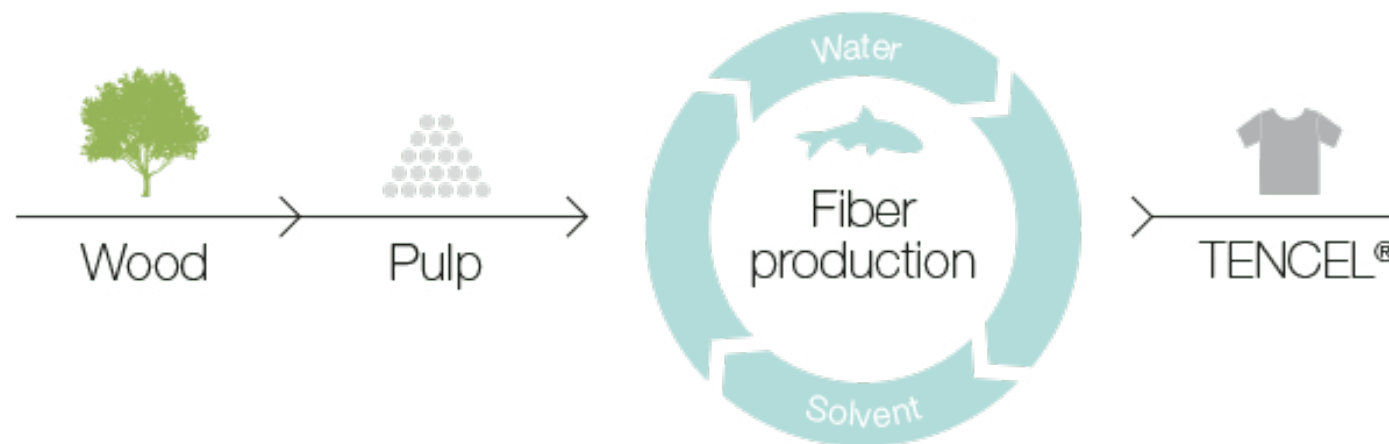
*key fabrics we use:*

**TENCEL®**

#### WHY WE USE IT?

Farms that grow the eucalyptus trees for Tencel® hold the Forest Stewardship Council (FSC) certification that guarantees that the products come from socially and environmentally responsible forest.

The fibre is produced via an advanced closed loop solvent spinning process, with minimal impact on the environment and economical use of energy and water. It uses amine oxide as a non-toxic solvent which is continually recycled during the production process. Products made from Tencel® can be recycled and are biodegradable because it is a cellulosic fibre.



*key fabrics we use:*

## BAMBOO

---

### WHAT IS IT?

Bamboo viscose is known as a manmade fabric. This is different to synthetic fabric, in that it is made from a plant base raw material.

To create the raw material into a fibre, the plant we use is bamboo, which is treated with chemicals before being made into a wearable fibre.





*key fabrics we use:*

## BAMBOO

---

### WHY WE LOVE IT?

Bamboo viscose is much-loved by our customers for numerous reasons:

- It is a highly renewable and sustainable plant based raw material.
- Its benefits range from its extreme ability to grow fast to being able to grow without any pesticides or fertilizers.
- Bamboo clothing is 100% biodegradable.



*key fabrics we use:*

## BAMBOO

---

### WHY WE USE IT?

The bamboo plant is a highly renewable resource and the fastest growing woody plant on Earth, with one species growing on average 3.3 feet a day.

The bamboo plant can reach its max height in less than 3 months. This speedy growth makes it a renewable, high-rotation crop – far better for farmers and the environment. It is naturally pest-resistant and can help rebuild eroded soil. Plus, the root network is so large that bamboo doesn't need replanting – instead it shoots straight back up again. These factors apply to the bamboo we use. It's grown organically, without any chemical fertilisers, herbicides or pesticides. Our bamboo is grown in farms and not natural forests and growth of bamboo can be considered as sustainable.

Bamboo viscose is also known to be 100% biodegradable.





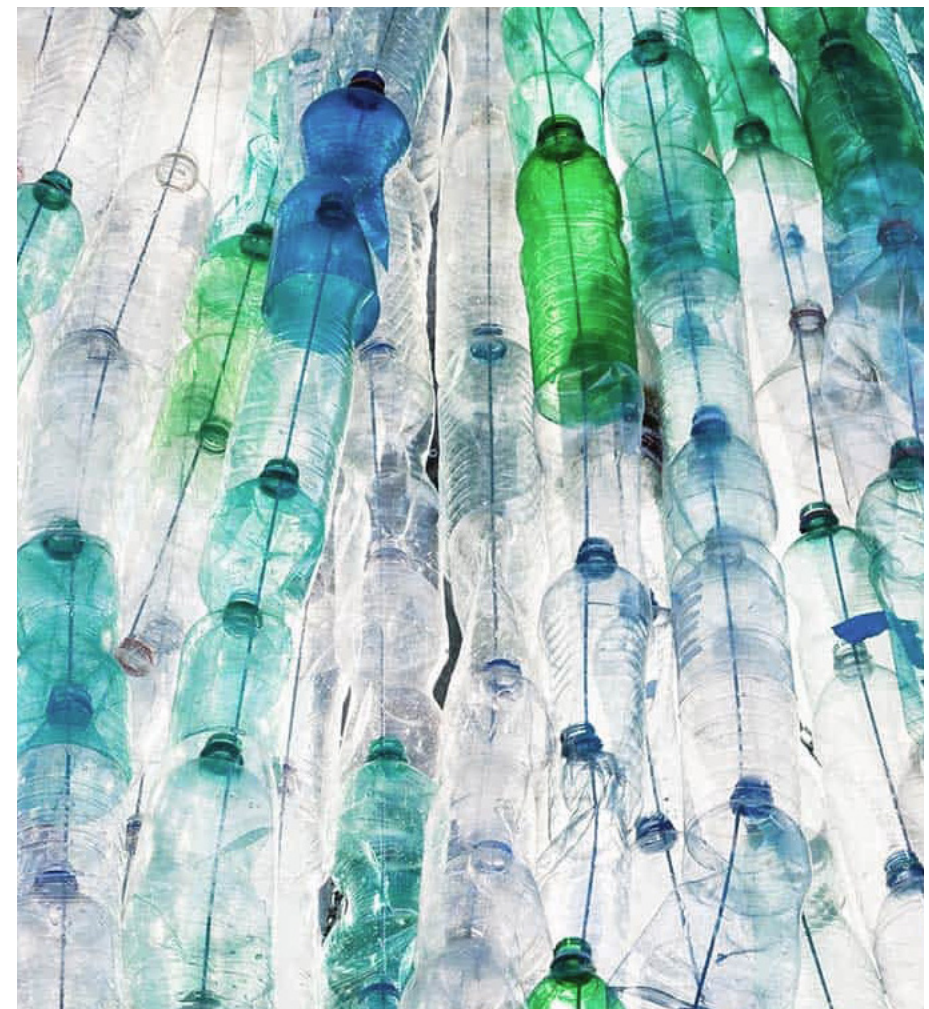
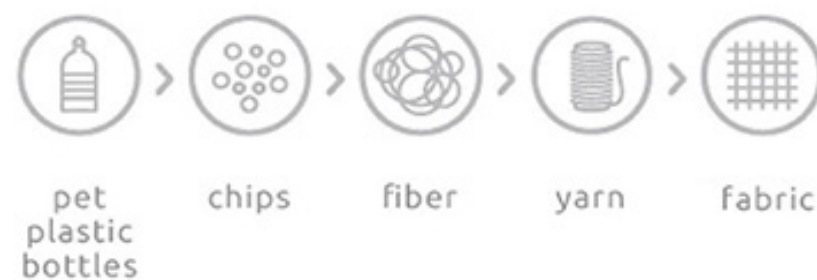
*key fabrics we use:*

## RECYCLED POLYESTER

### WHAT IS IT?

The word 'polyester' is often accompanied by negative connotations. But don't judge it too quickly - believe it or not our polyester was once a plastic bottle or two, known as PET - polyethylene terephthalate.

Once recycled and reworked, we give it a new lease of life in our garments and socks.



*key fabrics we use:*

## RECYCLED POLYESTER

---

### WHY WE LOVE IT?

Recycled polyester has some wonderful properties:

- It is extremely strong and durable, easily resisting creasing, stretching, shrinking and abrasion.
- As it's a hydrophobic in nature, that means it repels water and so dries quickly.
- Polyester is also elastic and retains its shape, which is why it's often used for performance wear and outdoor clothing.





*key fabrics we use:*

## RECYCLED POLYESTER

---

### WHY WE USE IT?

By using PET as a raw material, we are reducing the amount of plastic bottles reaching landfills, which has a positive impact on the environment already.

The process in converting PET into recycled polyester requires much less energy, up to 33-53% less energy consumption. It helps to reduce toxic emissions produced by incinerators. In turn, this lowers air pollution and our overall carbon footprint.

Choosing recycled polyester lessens our dependence on petroleum.

Garments made from recycled polyester can be recycled again and again, with no degrading of quality, allowing minimizing wastage. This means garment manufacture of recycled polyester could potentially become a closed loop system.





*summary of*  
**FABRIC CREDENTIALS**

---





**GOTS**

(THE GLOBAL ORGANIC  
TEXTILE STANDARD)



**LENZING**

TRADEMARK CLOSED  
LOOP PROCESS



**GLOBAL  
RECYCLE  
STANDARD**



**ECO CERT  
ORGANIC  
STANDARD**



**ISO – 14001  
ENVIRONMENTAL  
STANDARD**



**FSC SOURCED**



**OEKO  
– TEX 100 FIBRE**



**FAIRTRADE**

# WHAT IS GOTS?



The Global Organic Textile Standard (GOTS) is the worldwide leading textile processing standard for organic fibres, including ecological and social criteria, backed up by independent certification of the entire textile supply chain.

## AIM OF THE STANDARD

- Define requirements to ensure organic status of textiles
- From harvesting of the raw materials
- Through environmentally and socially responsible manufacturing
- Up to labelling in order to provide a credible assurance to the end consumer.

## WHAT CONSTITUTES AS ORGANIC COTTON?

- The raw material is produced on an organic farm.
- The farm is certified as organic by an organic certification body
- GOTS does not set the standard for fibre cultivation itself
- Organic farms are certified according to international or national legal standards

## HOW DO WE KNOW THAT OUR COTTON IS ORGANIC?

- Transparency of where our cotton is farmed.
- Confirmation that each farm is certified.
- A transaction receipt from the farm to the yarn mill.



# WHAT IS GRS?



The GRS (Global Recycle Standard) is an international, voluntary, full product standard that sets out requirements for third-party certification of recycled content, chain of custody, social and environmental practices and chemical restrictions. The goal of the GRS is to increase use of recycled materials in products and reduce/eliminate the harm caused by its production.

## THE OBJECTIVES OF GRS:

- Alignment of definitions across multiple applications;
- Track and trace recycled input materials;
- Provide customers (brands and consumers) with a tool to make informed decisions;
- Reduce harmful impact of production to people and the environment;
- Provide assurance that materials in the final product are actually recycled and sustainably processed;
- Drive innovation in addressing quality issues in the use of recycled materials.

## WHAT IS FSC?

---



‘FSC’ stands for Forest Stewardship Council, an organisation that works to promote the practice of sustainable forestry worldwide.

FSC runs a global forest certification system with two key components:

### AIM OF THE STANDARD

- Forest management, which involves an audit of forest’s management by an independent organisation to check that it meets internationally and nationally agreed standards of responsible forest management.
- Chain of custody, which ensures that FSC materials and products have been checked at every stage of processing so that customers purchasing FSC labelled products can be confident that they are genuinely FSC certified.

## WHAT IS OEKO-TEX®?

---

- OEKO-TEX® is an independent testing and certification system for raw, semi-finished, and finished textile products at all processing levels
- The OEKO-TEX® tests for harmful substances are fundamentally based on the respective purpose of the textiles and materials.
- The testing takes into account important legal regulations, such as banned Azo colourants, formaldehyde, pentachlorophenol, cadmium, nickel, etc.



## WHAT IS ECOCERT?

- ECOCERT is an inspection and certification body for sustainable development.
- It has specialized in the certification of organic agricultural products
- Putting its technical expertise to use in supporting the environment, developing its own specifications for the inspection and certification of products, systems and services.



## WHAT IS LENZING?

- Lenzing fibers are made of cellulose, the core component of all plants on earth.
- The source material wood is perfectly renewable: Trees regrow, feeding on sunlight, water and the carbon dioxide from our atmosphere.
- Lenzing's positive impact stretches from sustainable wood sourcing, via the responsible use of chemicals in production, to transparent information policies.
- They use a closed-loop processes for pulp and fiber production. Recycling 95% of water during production.



# WHAT IS ISO 14001?

---



ISO 14001 is a certifiable environmental management system (EMS) standard applicable to any organisation. The standard is recognised in most countries and participation in the scheme is voluntary. It puts more emphasis on improving environmental performance and makes it easier for organisations to implement an EMS according to their own environmental policy and other relevant requirements.

ISO 14001 sets out the requirements for EMS implementation:

- Environmental policy and objectives.
- Significant environmental aspects.
- Prevention of pollution.
- Continual improvement of environmental performance.

It requires that an organisation considers all environmental issues relevant to its operations, such as:

- Air pollution
- Water and sewage issues
- Waste management
- Soil contamination
- Climate change mitigation and adaptation
- Resource use and efficiency.



## FAIRTRADE COTTON

---

Fairtrade is about better prices, decent working conditions, local sustainability, and fair terms of trade for farmers and workers in the developing world. By requiring companies to pay sustainable prices,

Fairtrade addresses the injustices of conventional trade, which traditionally discriminates against the poorest, weakest producers. It enables them to improve their position and have more control over their lives.





# SPRING SUMMER 2020 FAIRTRADE LAUNCH

For the launch of Spring Summer 2020 collection we are introducing a fully Fairtrade & organic T-Shirt line. Producing clothes made with Fairtrade cotton means we can be a follower of fashion and at the same time help low paid cotton farmers around the world.

A Fairtrade product not only protects the farmers but also guarantees Fairtrade throughout the supply chain, from the spinners to the people sewing the garments.

The core FAIRTRADE Mark is recognised around the world. An amazing 93% of UK shoppers recognise and 83% trust it when deciding whether a product is ethical.



# *environmental* **SUSTAINABILITY**

---

Environmental sustainability is a core tenant of our foundational practises. We want to encourage habits that will not have negative long-term impacts on the environment, including the preservation of resources.

At Thought we have our own environmental policy that we ask suppliers to support...



# THOUGHT'S ENVIRONMENTAL POLICY

---

## STATEMENT OF INTENT

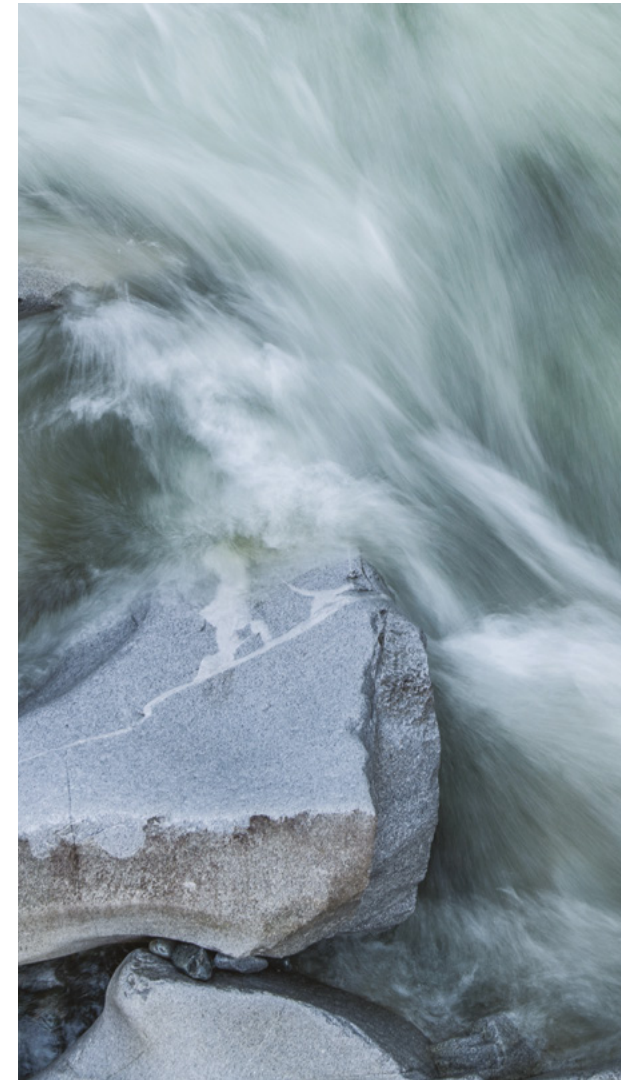
A fashion brand with sustainability as a core value, we recognise our responsibilities towards the environment, ecosystems and local communities. All suppliers and their supply chains are therefore required to comply with the following standards:

- Materials are sourced from natural, organic, renewable and recycled sources wherever possible.
- Farming and harvesting of natural fibre crops to produce the materials used in our garments do not contribute to habitat loss or destruction.
- Best available practice will be sought in the selection of chemicals and manufacturing processes, with certification, such as Oeko-tex, achieved wherever possible.
- All factory discharges to the atmosphere, water and land are within legal limits and have as minimal an impact on the local environment, people and ecosystems as possible.



## STATEMENT OF INTENT (CONT.)

- All factory discharges to the atmosphere, water and land are within legal limits and have as minimal an impact on the local environment, people and ecosystems as possible.
- A concerted effort is made to ensure water and energy is conserved wherever possible across our entire supply chain.
- During manufacture, our collection is transported in the most environmentally friendly way possible.
- Every effort is made to reduce, reuse and recycle all waste wherever possible. Any hazardous wastes are appropriately segregated, stored and disposed of responsibly.
- Sustainability and environmental performance are reviewed at least annually, to address any changes or additions to business activities and to promote continual improvement.





## *social* **STANDARDS**

---

Thoughts commitment to achieving high ethical social standards begins with ensuring working conditions reach the standards set by the International Labour Organisation. This is reflected in our company Code of Conduct.



## OUR CODE OF CONDUCT

---

We recognise our responsibility to the people involved in the production of our garments, including those we directly and indirectly employ.

All workers involved in the production of our products will therefore be entitled to fair wages, decent working conditions and the fundamental standards set out by the International Labour Organisation.

1. Employment is freely chosen
2. Freedom of association / staff representative
3. Working conditions are safe and hygienic
4. Child labour shall not be used
5. Living wages are paid
6. Working hours are not excessive
7. No discrimination is practiced
8. Regular employment is provided
9. No harsh or inhumane treatment is allowed



# THOUGHT'S AUDITING BODIES

Each auditing body follows the same base code principles in their audits.



**GOTS**

(GLOBAL ORGANIC TEXTILE  
STANDARD)



**SGS**

(GENERAL SOCIETY OF  
SURVEILLANCE)



**BSCI**

(BUSINESS SOCIAL  
COMPLIANCE INITIATIVE)



**TÜVRheinland®**  
Genau. Richtig.

**TUV**

(TECHNICAL INSPECTION  
ASSOCIATION)



**ETI**

(ETHICAL TRADE INITIATIVE)



# SUMMARY OF INTERNAL AUDITS

---

In addition to Thought's Code of Conduct, we ensure these regulations are adhered to by regular factory visits and conducting internal audits.

As Thought has grown, so have our factories and we understand the need to ensure that our social requirements are effectively followed. One of the ways that companies can get assurance about the performance of their suppliers in this regard is by requesting a 3rd party audit to report on processes and the actual situation. In order to evaluate this, a set of requirements are used as a benchmark standard and this is what we would be audited against in addition to local legislation. Currently we have a selection of 3rd party auditors who all follow the same set of base requirements when auditing a factory.

All social auditing practices need to be considered as part of a larger effort to improve labour conditions, including equitable contractual cooperation between buyers and suppliers, worker and management training, capacity building and various other tools to improve systems and collaboration.



# ETHICAL BUYING PRACTICES

---

As part of the ETI membership, this would support our current internal ethical practices. We pride ourselves on ensuring that our company ethos reflects throughout the whole business and not just in our sourcing and production.

We have formed relationships with the same suppliers for around 15 years and continue to work with these same set of suppliers in order to create long lasting strong relationships.

We do not cross cost with competitive suppliers to seek out the cheapest product cost, instead we support one another through these strong relationships, ensuring stability for our suppliers and guaranteed orders.

Our ethos is not to allow our suppliers to take on any major increase in cost, instead we often absorb the inflation cost into our margins to ensure this does not affect the productivity of our supply chain.



# SUMMARY OF FACTORY CREDENTIALS

	WOVEN PRODUCT	JERSEY PRODUCT	KNITTED PRODUCT	SOCKS
CREDENTIALS	<div><div>OEKO-TEX® CONFIDENCE IN TEXTILES STANDARD 100</div><div></div><div></div></div>	<div><div>OEKO-TEX® CONFIDENCE IN TEXTILES STANDARD 100</div><div></div><div></div><div></div></div>	<div><div>OEKO-TEX® CONFIDENCE IN TEXTILES STANDARD 100</div><div></div><div></div><div></div><div></div></div>	<div><div>OEKO-TEX® CONFIDENCE IN TEXTILES STANDARD 100</div><div></div><div></div></div>



# ETHICAL TRADE INITIATIVE

---

In addition to 3rd party audits, our long term strategy at Thought is to become active members of the Ethical Trade Initiative.

As well as adopting the Base Code, members must also sign up to ETI's Principle of Implementation. These require companies to:

- demonstrate a clear commitment to ethical trade;
- integrate ethical trade into their core business practices;
- drive year-on-year improvements to working conditions;
- support suppliers to improve working conditions, for example through advice and training; and report openly and accurately about their activities.



**Ethical  
Trading  
Initiative**

Respect  
for workers  
worldwide

# ETHICAL TRADE INITIATIVE

(CONTINUED)

---

## ADDITIONAL WITH ETI:

- Examining buying practices e.g. the prices and lead times companies give to suppliers;
- Helping suppliers build effective management systems, and;
- Encouraging suppliers to recognise and engage positively with trade unions, as a key enabler for improving workers' rights more broadly.



## *working with* **OUR SUPPLIERS**

---

China is the world's top textile exporter with 40% of world textile and clothing exports. The textile industry is one of the largest consumers of water in manufacturing and hence one of the main producers of industrial wastewater. Also, since various chemicals are used in different textile processes like pre-treatment, dyeing, printing, and finishing, the textile wastewater contains many toxic chemicals which if not treated properly before discharge to the environment, can cause serious environmental damage.





# WORKING WITH OUR SUPPLIERS

In light of this the Chinese government has been working towards enforcing new environmental standards and laws to ensure the sustainability of these resources and protection of the environment and people affected by this.

- China's environmental policy has placed textiles in a list of industries that are required to develop "circular economies".
- Any factories not complying to the new government policies have either had investment to improve their processes or have been shut down to ensure environmental improvement for the future.
- China's Environmental Protection Law and environmental policy today has the leverage to make it work in a way that will impact the environment as well as all industry within the country.









# WORKING WITH OUR SUPPLIERS

(CONTINUED)

---

Other positive reasons of why we chose to work with China for our production:

- Labour costs for the textile industry in China have been steadily increasing, wages for workers in China have doubled, and sometimes tripled, from what the industry was paying just 20 years ago.
- When you outsource to China, you're working with time-tested factories that have been producing quality products in similar industries as yours for years on end, and in massive supply.
- China has always been the world's largest producer of cotton, cloth, yarn and natural fibre due to superior agriculture resources.



## *packaging &* **LABELLING**

---

Not only do we think of sustainability when its comes to our garments production but also in our packaging and labelling.





# BIODEGRADABLE BAGS

---

In order to reduce our plastic consumption and impact on the planet we have converted all our plastic garment bags to 100% biodegradable materials made from corn starch.

## WHY WE USE IT?

To transform corn into plastic, corn kernels are processed and its components are broken down into starch.

- It is biodegradable, carbon-neutral and edible.
- Corn starch which converts to PLA (Polylactic Acid) saves two thirds of the energy you need to make traditional plastics.
- Unlike traditional plastics and biodegradable plastics, bioplastics generally do not produce a net increase in carbon dioxide gas when they break down, it produces almost 70 percent less greenhouse gases when it degrades in landfills.



# FSC CERTIFIED & RECYCLED PAPER LABELS

To ensure our paper labelling and packing is sustainably sourced we use FSC certified or recycled paper in all our production.

## WHAT IS FSC?

'FSC' stands for Forest Stewardship Council, an organisation that works to promote the practice of sustainable forestry worldwide. FSC-certified paper is different from recycled paper, as it's typically composed of virgin tree fibres rather than pre or post-consumer recycled materials.



## FSC CERTIFIED & RECYCLED PAPER LABELS

- When the wood pulp used to make FSC paper is sourced from a well-managed forest, it can be just as eco-friendly.
- The FSC Recycled label was introduced in order to recognise the important role that recycling paper and timber plays in protecting the world's forests. Unlike general 'recycled' claims, which require no verification, the FSC Recycled label provides assurance that all the wood or paper in a product has been verified as genuinely recycled.
- Wood is a renewable resource - so when forests are responsibly managed with consideration for the environment, the wildlife, and the people who live and work in them, harvesting timber can actually be an effective way of safeguarding forests for future generations.
- Choosing products sourced from responsibly managed forests and/or verified reclaimed sources, allows businesses and consumers to support the world's forests.



# ORGANIC COTTON LABELS

---

Not only is it important to us that our garments are made from organic cotton, but also the fabric labels we use inside the garments such as necks labels and care labels.

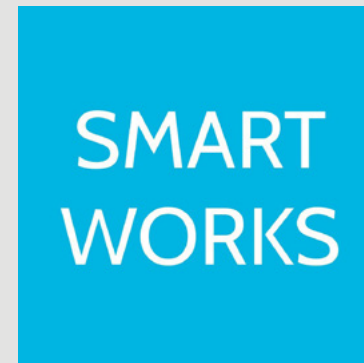
To ensure we are 100% Organic Cotton throughout our supply chain we are working towards converting all our cotton labelling to organic by Spring Summer 2020, supporting sustainability throughout the business.





*our*  
**PARTNERS**

---



# PETA

---

People for the Ethical Treatment of Animals (PETA) is the largest animal rights organization in the world, dedicated to establishing and defending the rights of all animals.

At Thought we have collaborated with PETA to help identify our vegan styles in our collections. This enables shoppers to search easily for all garments free from any animal products such as wool.



# SMART WORKS

---

Smart Works are an incredible charity that provides support to aspiring out of work women – through interview training and head-to-toe dressing. They have offices in some of the UK's major cities and have a great success rate in giving their clients the confidence to secure employment.

Every season we donate all of our unworn production samples and a selection of our current range, which enables them to offer more choice to their clients and set them up for success.



# TRAID

---

Our mantra “Wear Me, Love Me, Mend Me, Pass Me On” could just as easily be Traid’s. The charity stops over 3,000 tonnes of clothing going to landfill every year, often hand-selecting donations to suit the unique personality of each of their 11 stores.

As a partner of Traid’s, we work with them in two ways. Firstly, we donate re-saleable clothing to the charity every season. Secondly, we invite them to Thought HQ and also attend their workshops where we learn new skills like darning and denim patching, skills that we can then enjoy passing on to others.





## IN KIND DIRECT

---

Like other clothing businesses, we occasionally find ourselves with a little too much of our clothing. We want our un-sold garments to continue their journey, and so, we work In Kind Direct – a UK based charity that matches the surplus stock with those in need.

In Kind Direct redistributes products from companies to charities, social enterprises and not-for-profit organisations. This can be anything from cosmetically damaged furniture and household goods, to shoes and clothing.



# BRITISH RED CROSS

---

For every pair of sustainable socks purchased on our website in December 2018, we donated a pair to the British Red Cross. The socks were sent to their Hackney Destitution Resource Centre, who support asylum seekers and refugees across London. Thanks to our wonderful customers, we managed to send a whopping 11,000 pairs to the British Red Cross.



**British  
RedCross**



# TREES FOR CITIES

---

Trees for Cities are the only UK charity working at a national and international scale to improve lives by creating greener cities. Their dedicated volunteers cultivate lasting change in neighbourhoods – whether it's revitalising forgotten spaces, creating healthier environments or growing food with children.

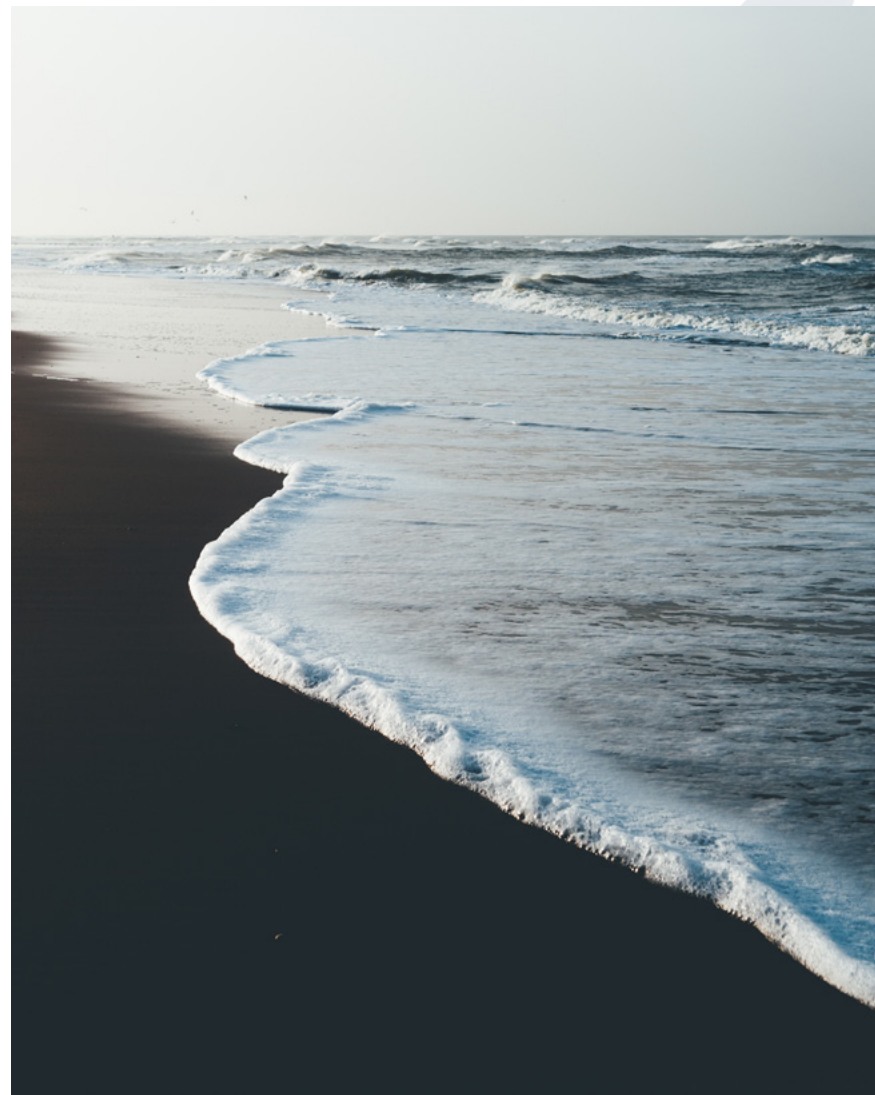




# THE MARINE CONSERVATION SOCIETY

---

The Marine Conservation Society is the UK's leading charity for the protection of our seas, shores and wildlife. Their mission is to drive political, cultural and social change for healthy seas and coasts that support abundant marine wildlife, sustainable livelihoods and enjoyment for all.





# GET IN TOUCH

---

Thought  
Westgate House  
149 Roman Way  
London N7 8XH

T: +44 20 7607 1173

F: +44 20 3538 9813

E: [info@wearethought.com](mailto:info@wearethought.com)

**[WEARETHOUGHT.COM](http://WEARETHOUGHT.COM)**